



Stroudley Road

Brighton

mishons



This well-presented three-bedroom townhouse offers bright, well-arranged accommodation across three floors, ideally located on Stroudley Road, just moments from Brighton Station and the wide range of shops, cafés and amenities within the city centre.

The ground floor provides a practical and versatile layout, featuring a spacious kitchen/dining room ideal for both everyday living and entertaining, with direct access out to a generous terrace—perfect for al fresco dining. A separate utility room and ground floor WC add further convenience. Uniquely for such a central location, the property also benefits from a private garage and off-street parking.

On the first floor, a light and airy living room opens onto a balcony, creating a wonderful indoor-outdoor feel. Two well-proportioned bedrooms are also found on this level, along with a family bathroom, offering flexible space for guests, family living or home working.

The second floor is dedicated to the principal bedroom suite, complete with built-in storage, an en-suite shower room, and access to a private roof terrace—an ideal retreat with elevated views.

Throughout, the property is presented in good order, with a light and bright atmosphere enhanced by its thoughtful layout and multiple outdoor spaces. Rarely available with both a garage and parking in such a central Brighton location, this home offers an exceptional opportunity for those seeking convenience, versatility and city living at its best.

➤ *Asking Price* £675,000

3



2



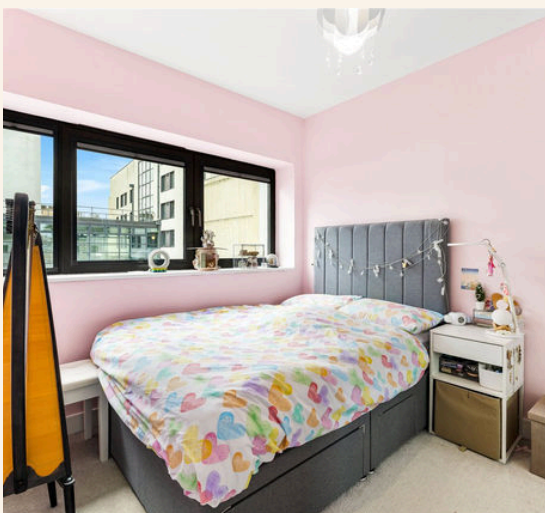
2



C



TOTAL FLOOR AREA:
1414 sq. ft. (131 sq. m.) approx





Whatever you're looking for...
We'll help you find it.

mishons

✉ sales@mishons.com

☎ 01273 77 88 77

94 Church Road, Hove, BN3 2EB

Monday-Friday: 8:45 am - 6 pm

Saturday: 9 am - 4 pm

Find us on Facebook and Instagram
@wearemishons or visit mishons.com