



Brunswick Place

Hove

mishons



Spacious Third Floor Apartment

Situated on the highly desirable Brunswick Place in Hove, this substantial three-bedroom first floor apartment offers generous and well-arranged accommodation within an attractive period building, just moments from the seafront and the many amenities of central Hove.


The property is entered via a welcoming central hallway, which provides access to the principal rooms and benefits from useful built-in storage. At the front of the property is a spacious living room, featuring an attractive curved bay window that allows an abundance of natural light to fill the room. This bright and elegant space provides an excellent setting for both everyday living and entertaining, with access to a private balcony that provides an ideal spot to enjoy the sea air and outlook towards the surrounding period architecture.

Leading from the hallway is a separate dining room, creating a distinct area for formal dining, family meals, or social gatherings. The dining room is conveniently positioned close to the separate fitted kitchen, which offers a range of units, ample worktop space, and room for appliances, providing a practical and functional cooking environment.

The sleeping accommodation is thoughtfully arranged to provide privacy and flexibility. The principal bedroom is a well-proportioned double room and benefits from built-in wardrobe storage, offering excellent practicality.

A second bedroom also includes built-in wardrobe space and would work well as a guest room, home office, or additional bedroom depending on individual needs. The third bedroom is positioned toward the opposite side of the apartment and offers a versatile space that could easily serve as a bedroom, study, or hobby room. The accommodation is completed by a bathroom, conveniently located off the main hallway.

Overall, the property offers a well-balanced layout with clearly defined living and sleeping areas, good storage throughout, and bright rooms enhanced by period proportions. With its spacious accommodation, private balcony, and sought-after location, this apartment represents an excellent opportunity for buyers seeking a large period flat close to the seafront, Hove Lawns, and the vibrant cafés, restaurants, and shops of Church Road.

 OIEO

£475,000

3



2



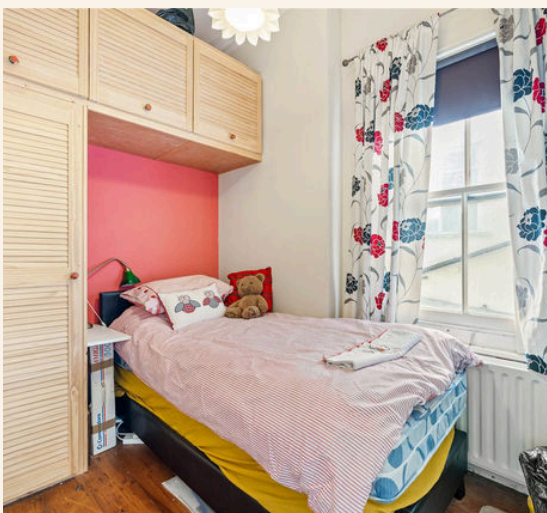
1



tbc



TOTAL FLOOR AREA:
1067 sq. ft. (99.1 sq. m.) approx





Whatever you're looking for...
We'll help you find it.

mishons

✉ sales@mishons.com

☎ 01273 77 88 77

94 Church Road, Hove, BN3 2EB

Monday-Friday: 8:45 am - 6 pm

Saturday: 9 am - 4 pm

Find us on Facebook and Instagram
@wearemishons or visit mishons.com