



# *Sussex Square*

Brighton

mishons



## Moments from the sea in one of Britain's most significant Regency garden squares, this spacious two-bedroom lower-ground floor apartment forms part of Thomas Kemp's Grade I-listed Sussex Square.

Surrounded by acres of private residents' gardens, it features a historic tunnel with direct access to the beach.

The apartment blends elegant Regency proportions with modern comfort and a practical layout. A private entrance adds independence, while a south-facing courtyard offers a peaceful spot for outdoor relaxation or dining.

Inside, a welcoming entrance hall with storage leads to a generous living/dining room flooded with natural light, perfect for everyday living and entertaining. A separate, well-equipped kitchen sits conveniently nearby.

To the rear, both bedrooms are peaceful doubles. The principal bedroom provides excellent space and built-in storage, while the second bedroom is particularly generous and includes a modern en-suite shower room. A separate family bathroom adds flexibility.

The building's exterior and communal areas have been beautifully refurbished to a high standard, earning recognition from the Heritage Trust. Residents enjoy exclusive use of the immaculate gardens and the unique tunnel to the seafront.

This substantial Regency apartment delivers privacy, space, and an exceptional coastal lifestyle in one of Brighton's most prestigious locations, ideal as a main home or luxurious pied-à-terre.

➤ *Guide Price* £525,000 - £550,000

2



1



2

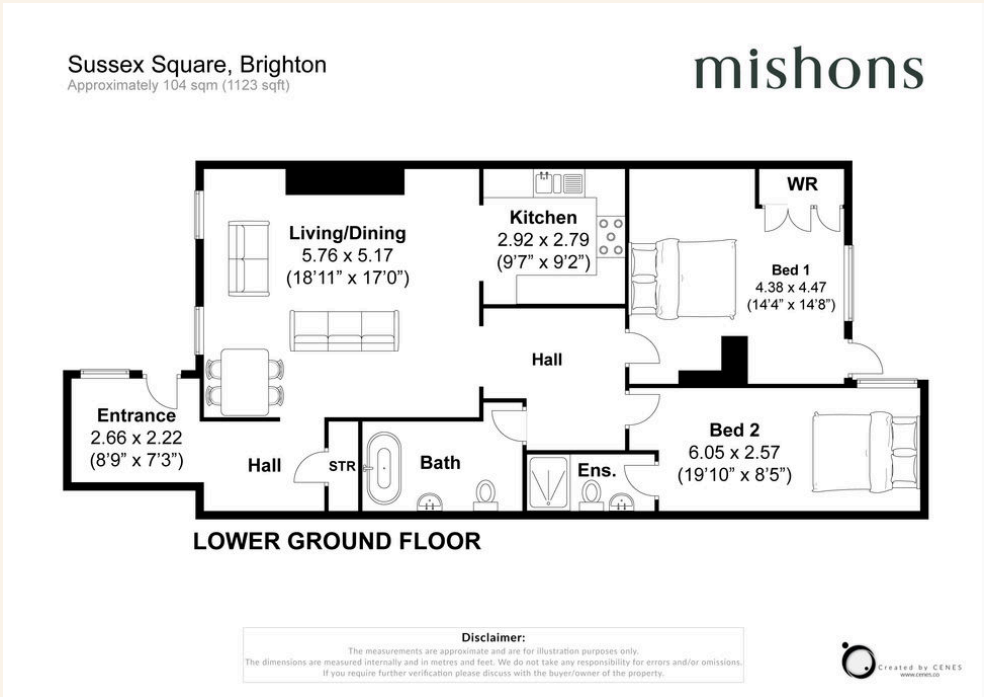


C





TOTAL FLOOR AREA:  
1123 sq. ft. (104 sq. m.) approx





Whatever you're looking for...  
*We'll help you find it.*

mishons

✉ [sales@mishons.com](mailto:sales@mishons.com)

☎ 01273 77 88 77

94 Church Road, Hove, BN3 2EB

Monday-Friday: 8:45 am - 6 pm

Saturday: 9 am - 4 pm

Find us on Facebook and Instagram  
@wearemishons or visit [mishons.com](http://mishons.com)