



Preston Road

Brighton

mishons



A stylish one bedroom garden flat, with a private entrance and front courtyard. Located in this vibrant and sought after Preston Park area.

This beautiful flat brings a modern finish whilst retaining original period features and wooden flooring throughout.

To the front of the property is a spacious bedroom, offering plenty of room for storage. The bedroom also benefits from large, double-glazed bay windows which floods this room with light.

The generous living area opens out to the private patio, adding a light and airy feel to the flat, with plenty of room for a dining table.

Following through from the social living space is the modern kitchen which overlooks the west facing patio, leading the way through to the perfectly designed and finished bathroom to the back of the property.

The flat also benefits from underfloor heating throughout both the kitchen and bathroom.

This flat would make either a great first purchase or a strong investment with it's convenient and popular location, being only 2 minutes from Preston Park and a 10-minute walk from Brighton Station.

➤ *OIEO*

£300,000

1



1



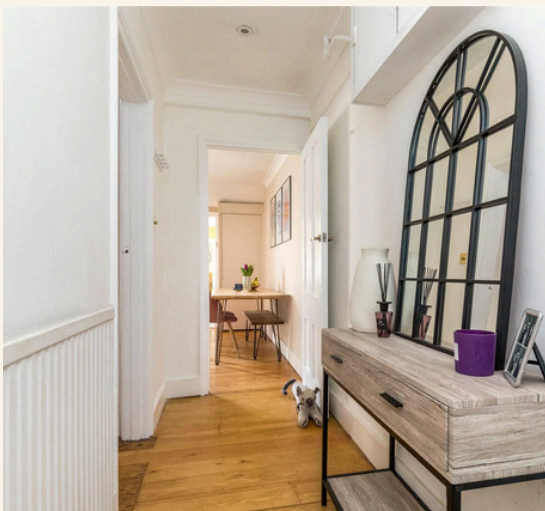
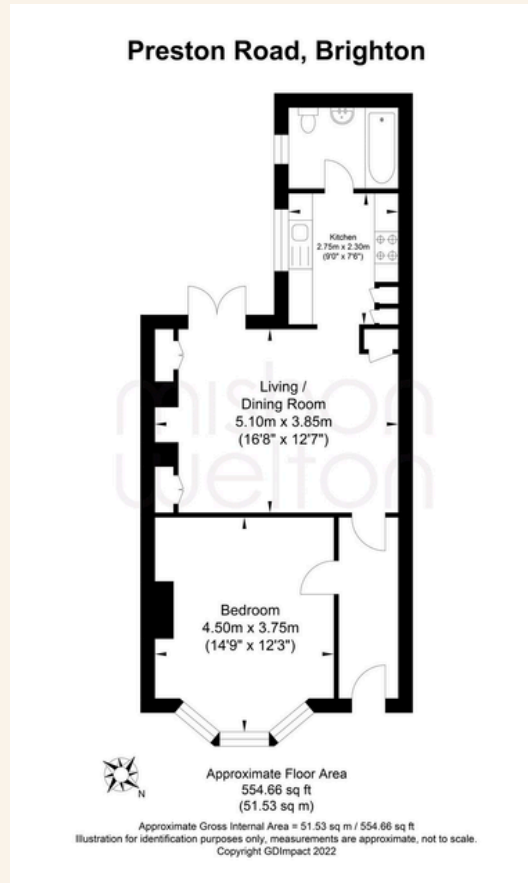
1



D



TOTAL FLOOR AREA:
554.66 sq. ft. (51.53 sq. m.) approx





Whatever you're looking for...
We'll help you find it.

mishons

✉ sales@mishons.com

☎ 01273 77 88 77

94 Church Road, Hove, BN3 2EB

Monday-Friday: 8:45 am - 6 pm

Saturday: 9 am - 4 pm

Find us on Facebook and Instagram
@wearemishons or visit mishons.com