



The Drive

Hove

mishons



CHAIN FREE

Boasting over 700 square feet in floor space and the bonus of a lovely west facing balcony, this one bedroom apartment on The Drive in the heart of Hove is a must see.

As you enter the apartment the wide entrance hall allows in lots of natural light. There is an abundance of storage space with two large cupboards in the hallway and custom made shelving.

The living room is a really spacious room, perfect for entertaining. Leading off the living room is the west facing balcony, it has lovely views of the tennis courts, and benefits from afternoon and evening sun. The kitchen is large and we think buyers will be able to put their own stamp on this room. The bedroom leads off the hallway and is a generously sized room with plenty of built in storage. The bathroom and w/c are separate and both are in good order.

There is a major bonus in a private parking space below with lift access to your own floor, guest parking is also at the rear.

Located on The Drive near the corner of Wilbury Avenue, the property is located in a central position, being within walking distance to Hove Station, the seafront and Church Road, as well as easy access to the A27.

➤ *OIEO*

£300,000

1



1



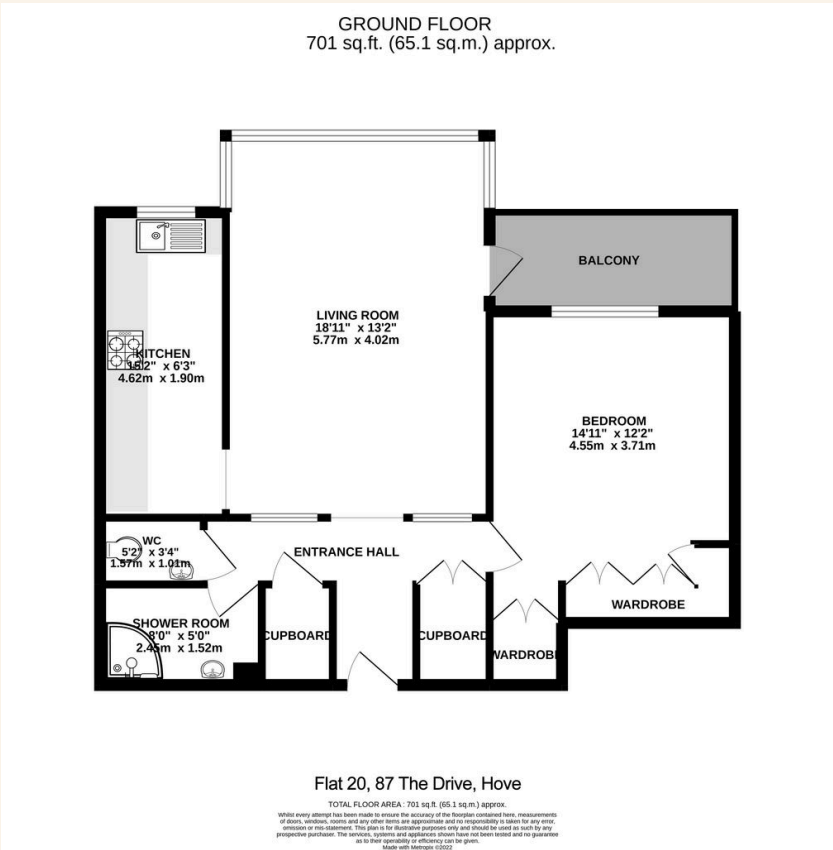
1



C



TOTAL FLOOR AREA:
701 sq. ft. (65.1 sq. m.) approx





Whatever you're looking for...
We'll help you find it.

mishons

✉ sales@mishons.com

☎ 01273 77 88 77

94 Church Road, Hove, BN3 2EB

Monday-Friday: 8:45 am - 6 pm

Saturday: 9 am - 4 pm

Find us on Facebook and Instagram
@wearemishons or visit mishons.com