



Sillwood Road

Brighton

mishons



Nestled in one of Brighton's most desirable central locations, this beautifully presented one-bedroom first-floor flat on Sillwood Road offers an inviting combination of period charm, contemporary style, and unbeatable convenience.

Just a short stroll from both the seafront and Western Road's array of independent cafés, shops, and restaurants, the property provides an ideal home for those who want to enjoy everything the city has to offer while maintaining a peaceful, comfortable living space.

The flat occupies the first floor of an elegant period building, benefitting from high ceilings, tall sash windows, and classic architectural details that lend character and a sense of light and space. The generously sized living room serves as the heart of the home – a bright and airy space that's perfect for relaxing or entertaining. Original features such as decorative cornicing complement tasteful décor, while the large windows flood the room with natural daylight.

The modern fitted kitchen has been thoughtfully designed to make the most of the space, offering ample storage, stylish cabinetry, and integrated appliances (where applicable). It's a practical and attractive area suited for everyday cooking or hosting guests. The double bedroom is positioned toward the rear of the property, creating a calm and private retreat. It easily accommodates a double bed and additional furniture, while maintaining a restful, uncluttered atmosphere.

The bathroom continues the contemporary theme with a clean, neutral finish, featuring a shower over bath, modern tiling, and quality fittings. Throughout the flat, the interiors have been maintained to a high standard, combining classic charm with the ease of modern living.

Sillwood Road is perfectly placed for professionals and commuters alike, with excellent transport links nearby, including Brighton Station within walking distance and frequent bus services across the city. The beach and promenade are only a few minutes away, offering a perfect escape for morning runs, evening strolls, or weekends by the sea.

This delightful flat offers the perfect balance of city vibrancy and coastal calm, providing a comfortable and stylish home right in the heart of Brighton.

➤ *Guide Price* **£275,000**

1



1



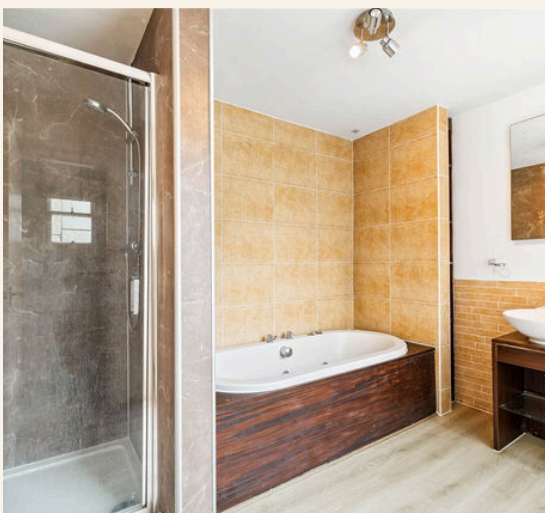
1



C



TOTAL FLOOR AREA:
504 sq. ft. (47 sq. m.) approx





Whatever you're looking for...
We'll help you find it.

mishons

✉ sales@mishons.com

☎ 01273 77 88 77

94 Church Road, Hove, BN3 2EB

Monday-Friday: 8:45 am - 6 pm

Saturday: 9 am - 4 pm

Find us on Facebook and Instagram
@wearemishons or visit mishons.com