



Wilbury Gardens

Hove, BN3 6HQ

mishons



Wilbury Gardens – Two Bedroom Apartment with Huge Potential

Set within one of Hove's most sought-after addresses, this first floor apartment spans just under 1,000 sq ft and offers an exciting opportunity for the next owner to make it their own.

The proportions throughout are impressive. The main bedroom is a generous size with ample space for fitted wardrobes and offers views of the garden, while the second bedroom is also a good size double. At the heart of the home sits a superb west-facing living room, filled with afternoon and evening light. A separate kitchen diner and bathroom complete the current layout.

The property is in need of renovation, and subject to the necessary consents, could be reconfigured to create a three-bedroom home – a rare prospect in this location!

Further benefits include access to a large communal garden and the ability of a long-term rental of a parking space on the drive.

Offered to the market chain free and current lease length is 84 years.

This is a prime opportunity to secure a great apartment in a popular part of Hove, moments from the seafront, the station and the vibrant cafés and restaurants of Church Road.

View now to appreciate the scale and potential.

 **Guide Price** **£450,000**

2



1



1



#



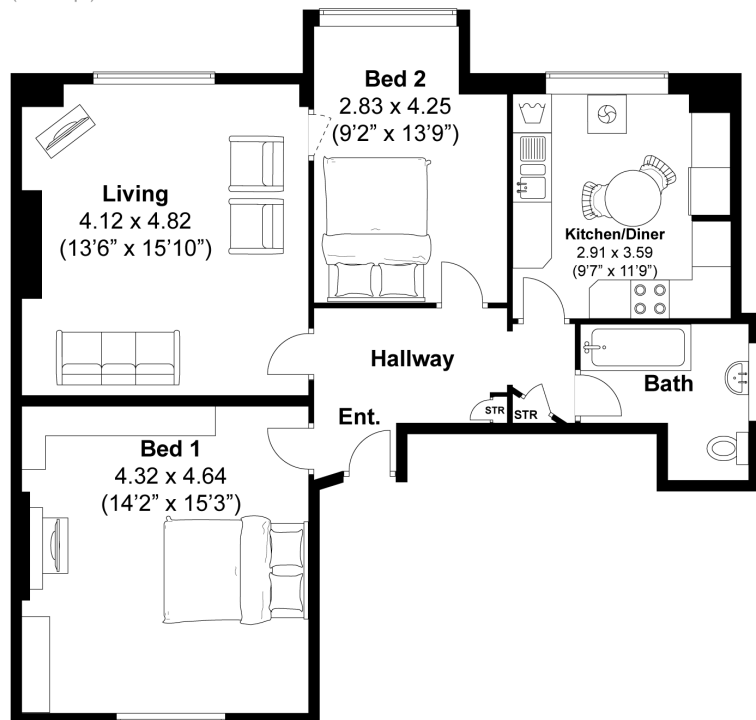
TOTAL FLOOR AREA:

945 sq. ft. (87.8 sq. m.) approx

Wilbury Gardens, Hove

Approximately 87.8 sqm (945 sqft)

mishons





Whatever you're looking for...
We'll help you find it.

mishons

✉ sales@mishons.com

☎ 01273 77 88 77

94 Church Road, Hove, BN3 2EB

Monday-Friday: 8:45 am - 6 pm

Saturday: 9 am - 4 pm

Find us on Facebook and Instagram
@wearemishons or visit mishons.com