



Waterloo Street

Hove

mishons



Set on the lower ground floor of a handsome period building on Waterloo Street, this beautifully arranged two-bedroom apartment combines a smart layout with the bonus of a private courtyard, all just moments from Brighton's seafront and the vibrant Western Road.

The property is accessed via its own private entrance, leading into a welcoming hallway. At the front sits the principal bedroom, a generous double with a charming curved bay window and fitted wardrobes, creating both character and practicality.

At the heart of the apartment lies a bright open-plan living and kitchen space. This sociable area is ideal for modern living, offering plenty of room for cooking, dining and relaxing. French doors lead directly out to the private courtyard garden, providing a seamless flow between inside and out, and a rare opportunity for al fresco dining or quiet mornings with a coffee.

To the rear, the second double bedroom overlooks the courtyard, offering a peaceful retreat that would work perfectly as a guest room, home office or additional bedroom. The bathroom is centrally located, finished with a smart modern suite, while a separate storage cupboard adds to the practicality of the home.

The layout has been thoughtfully designed, with bedrooms at opposite ends of the apartment for excellent privacy, and the open-plan living space acting as a stylish centrepiece.

Waterloo Street is ideally positioned between Brighton and Hove, just a short stroll from the beach, independent cafés and boutiques, as well as excellent transport links into London via Brighton Station.

With its private entrance, well-balanced layout and outdoor space, this property makes an outstanding choice for a first-time buyer, city professional, or as a stylish pied-à-terre by the sea.

➤ *Asking Price* £375,000

2



1



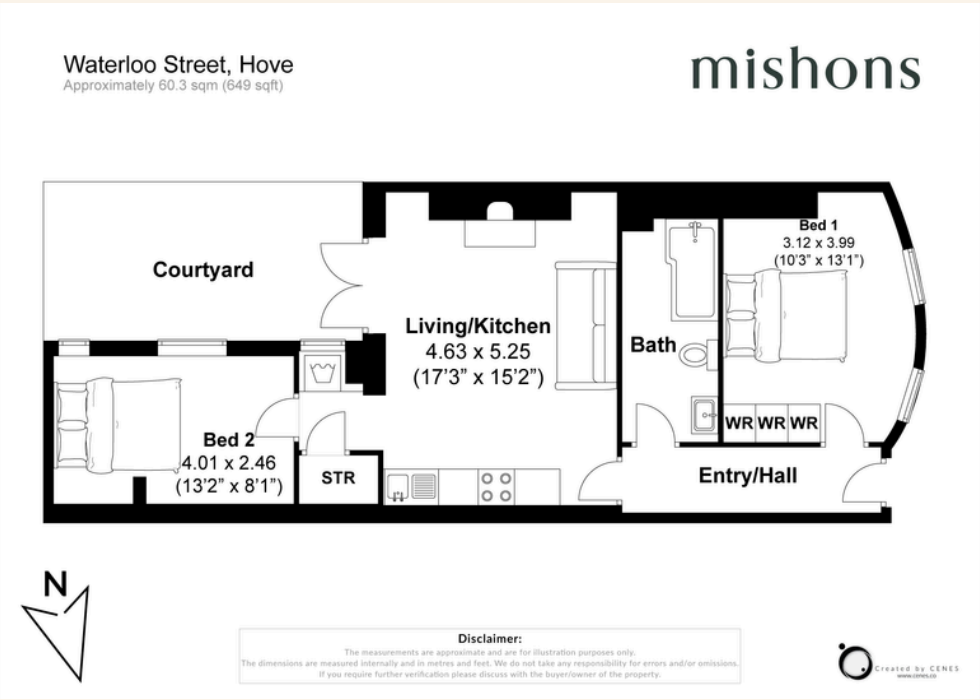
1



tbc



TOTAL FLOOR AREA:
649 sq. ft. (60.3 sq. m.) approx





Whatever you're looking for...
We'll help you find it.

mishons

✉ sales@mishons.com

☎ 01273 77 88 77

94 Church Road, Hove, BN3 2EB

Monday-Friday: 8:45 am - 6 pm

Saturday: 9 am - 4 pm

Find us on Facebook and Instagram
@wearemishons or visit mishons.com