



Montpelier Crescent

Brighton

mishons

A rarely available two-bedroom apartment on one of Brighton's most desirable Crescents - with a fantastic South facing garden.

Extending to around 1,032 sq ft, the apartment offers a well balanced layout with good proportions throughout, alongside some lovely period features that give it real character.

The main living room is a generous and comfortable space, ideal for both everyday living and having people over and is complete with a recently installed log burner. The kitchen is separate and thoughtfully arranged, making it practical without feeling tucked away.


Both bedrooms are good sized doubles. The principal bedroom opens directly onto a private balcony, which brings in plenty of natural light and adds to the feeling of space. There is also a separate dining hall, which works well as a dining area, home office or an additional living space depending on how you like to live.

A bathroom and separate WC add to the overall practicality.

One of the real highlights here is the garden. It is private, sunny and a rare find in such a central location. Whether it is morning coffee, summer evenings or a bit of quiet downtime, it is a space you will actually use.

To the rear, there is also a very well built garden room. It is solid and thoughtfully finished with cladding and mains electricity already in place. It works brilliantly as a home office or gym, but really comes into its own as a workspace, with a calm outlook over the garden.

Set in the heart of Seven Dials, you are right in the middle of one of Brighton's most loved neighbourhoods, with everything on your doorstep while still having a calm and private place to come home to.

 **OIEO** **£900,000**

2



2



1







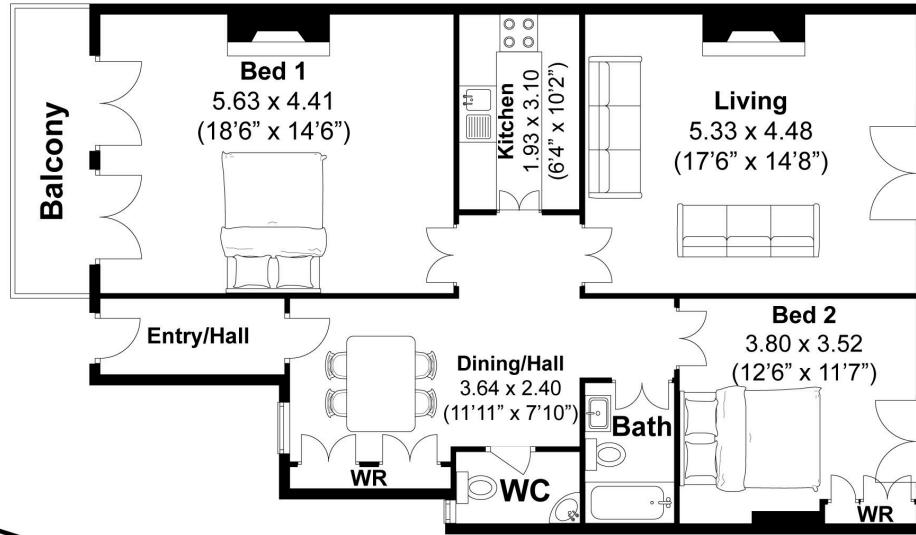


TOTAL FLOOR AREA:

96 sqm | 1032 sqft

Montpelier Crescent, Brighton
Approximately 96 sqm (1032 sqft)

mishons



Disclaimer:
The measurements are approximate and are for illustration purposes only.
The dimensions are measured internally and in metres and feet. We do not take any responsibility for errors and/or omissions.
If you require further verification please discuss with the buyer/owner of the property.

Created by CENES
www.cenes.co



Exceptional service

We love doing what we do, so it's always done with honesty, energy, and a smile. From marketing to moving, our team is here to guide you, step-by-step, through the process of selling your home. We'll always give you honest opinions and share our local market expertise so that you'll know where you stand at every point of the journey.

Our people are a great team. All pros, brimming with experience and drive. So we promise you all focus and no fuff to make sure your sale runs smoothly and hassle-free from start to completion. We'll always keep you in the loop and keep a beady eye on your chain if you're in one so that we can respond to any changes instantly.

And never forget, we're here for you at any time.

Service checklist



Personal, one-to-one service



Expert social media marketing



Honest valuations in line with current market conditions



Professionally designed and printed brochures



Ahead of the game marketing strategies



Daily sales progression



Professional photography



In-house financial advisors

Mishons & their clients give notice that:

1. These sales and particulars do not constitute any part of an offer of contract, and are for the guidance of prospective purchasers only and should not be relied on as statements of fact.
2. No representations are made in these particulars as to the condition of the property or as to whether any service or facilities are in good working order.
3. All Measurements are approximate.



Whatever you're looking for...
We'll help you find it.

✉ sales@mishons.com

☎ 01273 77 88 77

94 Church Road, Hove, BN3 2EB

Monday-Friday: 8:45 am - 6 pm

Saturday: 9 am - 4 pm

Find us on Facebook and Instagram
@wearemishons or visit mishons.com