



*Kingsway*

Hove

mishons

# Stunning Three-Bedroom Penthouse Duplex with Panoramic City and Sea Views

Occupying the top two floors of a prestigious modern development just south of Kingsway, this exceptional three-bedroom penthouse duplex offers a rare opportunity to enjoy uninterrupted city and sea views from every room. With over 1,400 sq ft of beautifully designed living space, this light-filled apartment is the perfect lock-up-and-leave coastal home, moments from Hove Beach Park, the seafront, and all the lifestyle benefits the area has to offer.

Entered via secure video entry with lift access, the apartment opens into a stylish sixth-floor entrance hall with space for coats and shoes, and a convenient guest cloakroom. From here, you're welcomed into an expansive open-plan living, kitchen, and dining area – the heart of the home – featuring sleek Miele appliances, generous worktops, and full-height floor-to-ceiling windows that flood the space with natural light and perfectly frame the iconic coastline, with views of the i360 and Hove Lawns. A generous private balcony extends the living area outdoors – ideal for entertaining or enjoying sunrise coffees over the sea.

Upstairs, the seventh floor hosts three generously sized bedrooms, each with its own en-suite bathroom, providing privacy and comfort for family or guests. The standout principal suite enjoys a corner position with sweeping views from the Downs to the sea, abundant built-in storage, and a luxurious en-suite shower room. Bedroom two is also a spacious double, with direct access to a sun-soaked private terrace and its own en-suite, while bedroom three is ideal as a guest room or home office, also benefiting from an en-suite shower room.

Throughout, the apartment is immaculately presented, with a high-spec finish and an abundance of natural light, thanks to the full-height glazing and elevated position.

Further enhancing the lifestyle offering are two secure gated underground parking spaces, a rarity in the area, two indoor secure bike storage areas and the unique setting – one of the few residential blocks located south of Kingsway, placing you just moments from the beach and promenade.

Whether you're seeking a stylish coastal residence, a lock up and leave weekend retreat, or a spacious modern home with some of the best views in the city, this penthouse delivers on every level.

 **Offers Over £1,000,000**

3



1



3



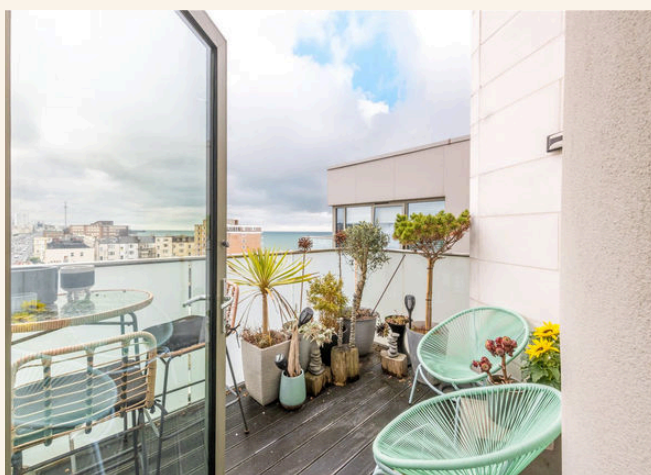
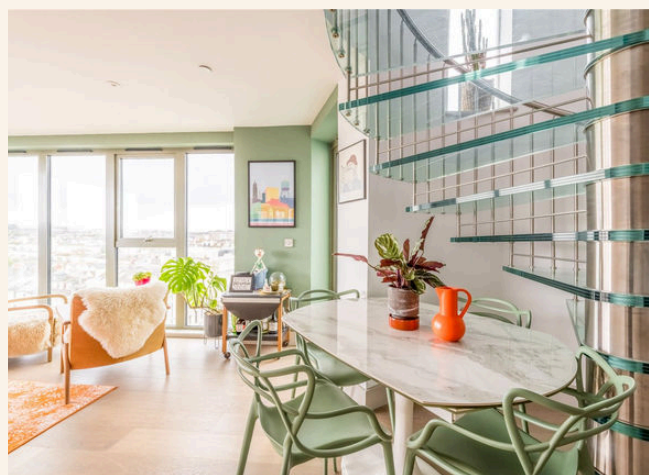
B















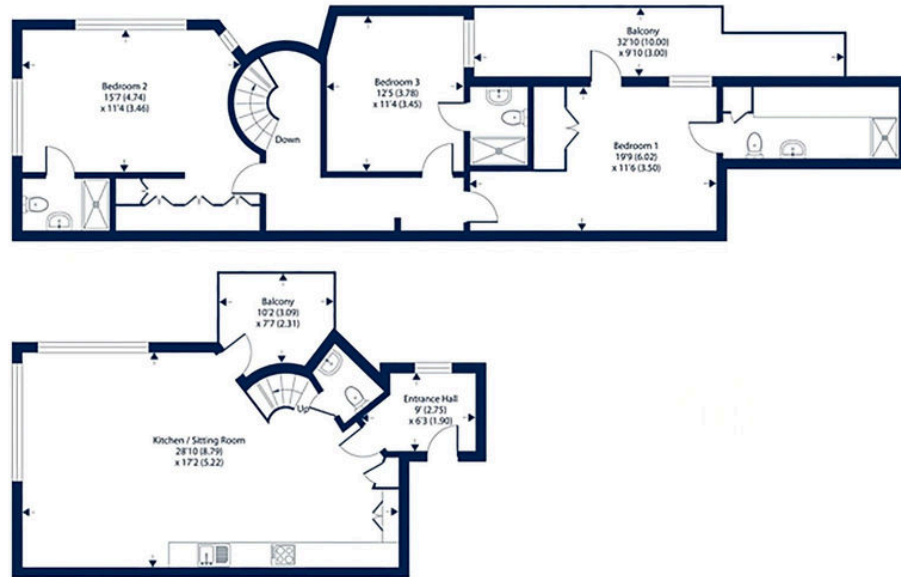
## TOTAL FLOOR AREA:

1407 sq ft / 130.7 sq m

### Kingsway, Hove, BN3

Approximate Area = 1407 sq ft / 130.7 sq m

For identification only - Not to scale





# Exceptional service

We love doing what we do, so it's always done with honesty, energy, and a smile. From marketing to moving, our team is here to guide you, step-by-step, through the process of selling your home. We'll always give you honest opinions and share our local market expertise so that you'll know where you stand at every point of the journey.

Our people are a great team. All pros, brimming with experience and drive. So we promise you all focus and no faff to make sure your sale runs smoothly and hassle-free from start to completion. We'll always keep you in the loop and keep a beady eye on your chain if you're in one so that we can respond to any changes instantly.

And never forget, we're here for you at any time.

## Service checklist



Personal, one-to-one service



Expert social media marketing



Honest valuations in line with current market conditions



Professionally designed and printed brochures



Ahead of the game marketing strategies



Daily sales progression



Professional photography



In-house financial advisors

---

### *Mishons* & their clients give notice that:

1. These sales and particulars do not constitute any part of an offer of contract, and are for the guidance of prospective purchasers only and should not be relied on as statements of fact.
2. No representations are made in these particulars as to the condition of the property or as to whether any service or facilities are in good working order.
3. All Measurements are approximate.



Whatever you're looking for...  
*We'll help you find it.*

✉ [sales@mishons.com](mailto:sales@mishons.com)

☎ 01273 77 88 77

94 Church Road, Hove, BN3 2EB

Monday-Friday: 8:45 am - 6 pm

Saturday: 9 am - 4 pm

Find us on Facebook and Instagram  
@wearemishons or visit [mishons.com](http://mishons.com)