



Wordsworth Street

Hove

mishons



Nestled in the heart of the highly desirable Poet's Corner, this beautifully presented three-bedroom end-of-terrace home effortlessly combines timeless period features with stylish contemporary finishes, creating a warm and inviting space that's perfect for modern living.

As you step inside, you're greeted by a generously proportioned open-plan living and dining area. The space is bathed in natural light, thanks to elegant bay-fronted windows that not only enhance the home's character but also create a bright and airy atmosphere. Original features subtly blend with modern updates, adding charm and sophistication. Whether you're entertaining guests or enjoying a quiet evening in, this versatile space adapts beautifully to your lifestyle.

To the rear, a sleek and thoughtfully designed modern kitchen awaits. Fully equipped with integrated appliances and ample storage, it's a haven for cooking enthusiasts. Large doors open out directly onto a private patio garden, offering a serene outdoor retreat perfect for alfresco dining, weekend gatherings, or simply enjoying a peaceful coffee in the morning sun.

Upstairs, the first floor offers three well-proportioned double bedrooms, each designed with comfort and functionality in mind. The rooms benefit from plenty of natural light and can easily accommodate a growing family, visiting guests, or provide the ideal space for a dedicated home office. A stylish, fully fitted family bathroom completes the upper level, featuring contemporary fixtures and a clean, modern design.

Positioned on a quiet, tree-lined residential street, this exceptional property is just moments from the vibrant heart of Hove. Residents will enjoy easy access to an array of independent shops, popular cafes, outstanding local schools, and excellent transport links, making commuting or weekend seaside escapes a breeze.

Offering a harmonious balance of peaceful living and urban convenience, this is a rare opportunity to own a truly special home in one of Hove's most sought-after neighbourhoods.

 **Guide Price** £600,000-£625,000

3



2



1



D



TOTAL FLOOR AREA:
879 sq. ft. (81.7 sq. m.) approx

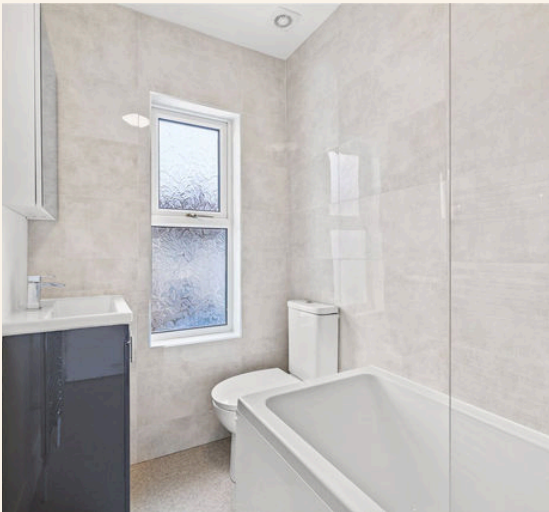




Disclaimer:

The measurements are approximate and are for illustration purposes only.
The dimensions are measured internally and in metres and feet. We do not take any responsibility for errors and/or omissions.
If you require further verification please discuss with the buyer/owner of the property.

 Created by CENES
www.cenes.co.uk





Whatever you're looking for...
We'll help you find it.

mishons

✉ sales@mishons.com

☎ 01273 77 88 77

94 Church Road, Hove, BN3 2EB

Monday-Friday: 8:45 am - 6 pm

Saturday: 9 am - 4 pm

Find us on Facebook and Instagram
@wearemishons or visit mishons.com