



Viceroy Lodge, Kingsway

Hove

mishons



An opportunity to own one of the largest apartments in the iconic Viceroy Lodge – one of Hove’s most distinguished Art Deco buildings. Offering nearly 1,600 sq ft of floor space this has heaps of space and potential.

Positioned on a high floor, the apartment is flooded with natural light throughout. The generous layout includes a large reception room, separate kitchen, three double bedrooms, and two bathrooms, offering endless potential for reconfiguration (subject to necessary consents).

The apartment requires full refurbishment, making it ideal for buyers looking to take on a project and add significant value in a sought-after coastal location.

Key Features:

Approx. 1,600 sq ft of internal space

Two private balconies with superb views plus communal gardens

Located in Viceroy Lodge, a landmark seafront development

Excellent renovation potential

Share of freehold

Hove seafront over the road, local amenities just a couple of minutes walk away and transport links

Offered with no onward chain, this is a prime opportunity to secure one of Hove’s most generously proportioned seafront apartments and create a bespoke residence in an unrivalled location.

 **Guide Price** **£650,000**

3



1



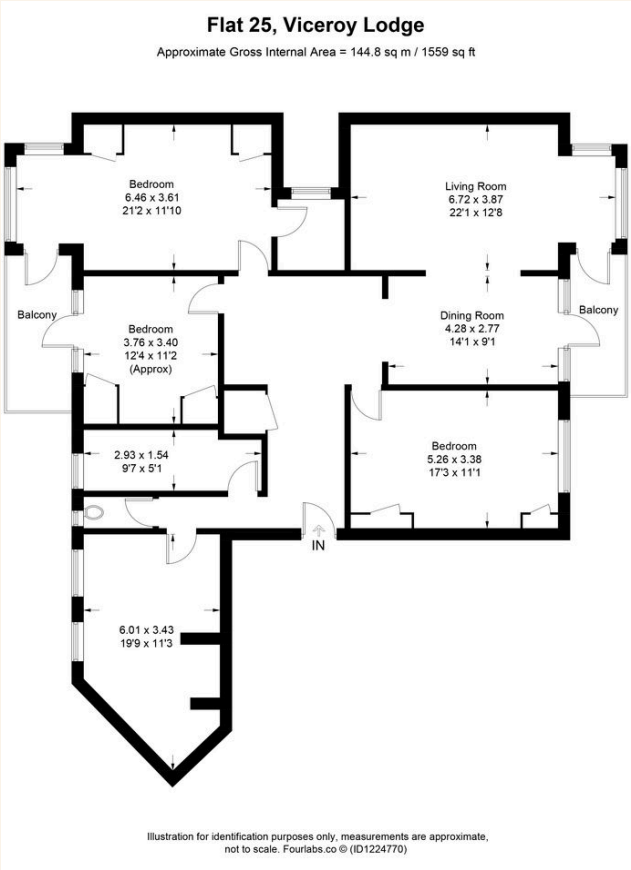
2



TBC



TOTAL FLOOR AREA:
1559 sq. ft. (144.8 sq. m.) approx





Whatever you're looking for...
We'll help you find it.

mishons

✉ sales@mishons.com

☎ 01273 77 88 77

94 Church Road, Hove, BN3 2EB

Monday-Friday: 8:45 am - 6 pm

Saturday: 9 am - 4 pm

Find us on Facebook and Instagram
@wearemishons or visit mishons.com