



Goldstone Villas

Hove

mishons



Located just a few seconds walk from Hove Station, this beautifully presented one-bedroom first-floor flat offers the perfect combination of period charm, contemporary style, and a superb central location.

Set within a classic Victorian conversion, the property features high ceilings, large sash windows, and tasteful décor throughout, creating a bright and inviting living space ideal for modern living.

The generous living room is flooded with natural light and offers plenty of space for both relaxing and entertaining. The separate kitchen is smartly designed with fitted units, integrated appliances, and ample worktop space — perfect for home cooking or casual dining.

The feature panelled inner hallway/reception area has plenty of space for coats and useful built in shelving for further storage.

The double bedroom is well-proportioned and quietly positioned at the rear of the property, offering a peaceful retreat with enough space for additional storage or a work-from-home area. The bathroom has been stylishly updated with contemporary tiling, a full-size bath with shower over, and quality fittings.

Set on a central, tree-lined street in one of Hove's most desirable residential areas, the flat is perfectly positioned for easy access to local amenities. Hove Station offers direct links to London and Brighton, while nearby George Street, Church Road, and the seafront provide a wide selection of cafés, restaurants, boutiques, and leisure facilities.

Don't miss this opportunity to own a stylish home in one of Hove's most connected and vibrant neighbourhoods.

➤ *Guide Price* **£275,000**

1



1



1

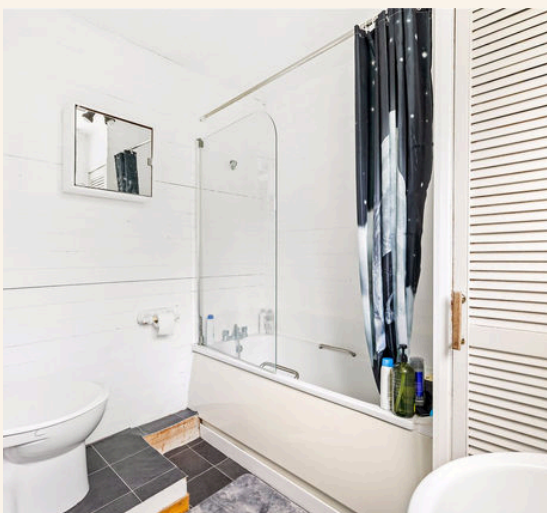
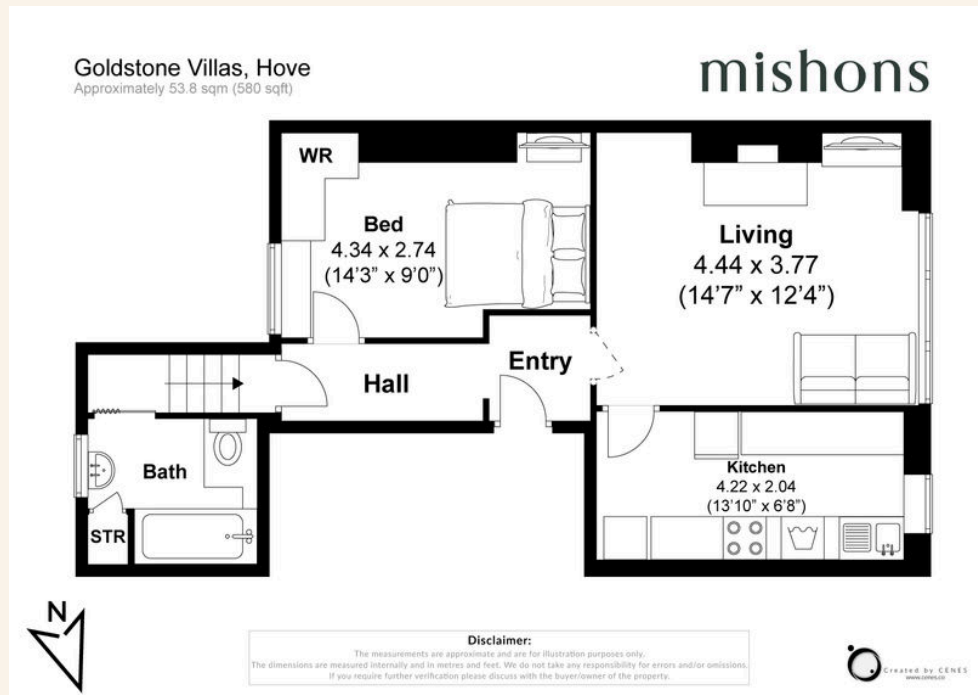


E



TOTAL FLOOR AREA:

580 sq. ft. (53 sq. m.) approx





Whatever you're looking for...
We'll help you find it.

mishons

✉ sales@mishons.com

☎ 01273 77 88 77

94 Church Road, Hove, BN3 2EB

Monday-Friday: 8:45 am - 6 pm

Saturday: 9 am - 4 pm

Find us on Facebook and Instagram
@wearemishons or visit mishons.com