



Regents Court

Regency Square, Brighton

mishons



Stylish Two-Bedroom Apartment with Sea Views – Regency Square, Brighton

Positioned on one of Brighton's most iconic garden squares, this beautifully refurbished two-bedroom apartment offers elegant living in the heart of the city.

Located on the first floor of a classic Regency building, the property is accessed via a lift and the front door opens into a welcoming entrance hallway, setting the tone for the rest of this charming home.

Freshly laid carpet leads you up a few internal stairs to the main living spaces. Both bedrooms are generously proportioned and have recently undergone a comprehensive refurbishment, offering crisp finishes and a calm, neutral palette throughout. The principal bedroom sits at the heart of the apartment – grand in size and ideally positioned for access to the bathroom and living areas.

The bathroom has been tastefully updated with contemporary tiling and features a modern suite including a full-size bath and rain shower – perfect for unwinding after a day by the sea.

The galley-style kitchen is fully equipped and functional, providing everything you need, though there's scope to add your own style with a cosmetic update. The highlight of the property is the large south-west facing lounge, flooded with natural light from three impressive floor-to-ceiling sash windows, framing picturesque views over the square and towards the coastline.

From here, you can step out onto your private balcony—ideal for morning coffees or evening drinks – with views across Regency Square, the iconic i360, and the sparkling seafront beyond.

Offered chain-free and with a share of freehold, this is a rare opportunity to secure a turn-key property in one of Brighton's most desirable locations. Whether you're looking for a permanent residence, a stylish weekend retreat, or a savvy investment, this apartment really does tick all the boxes.

 **Guide Price** £500,000

2



1



1



#



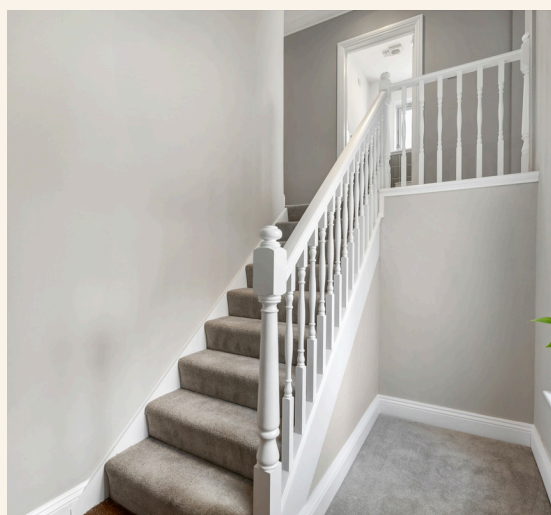
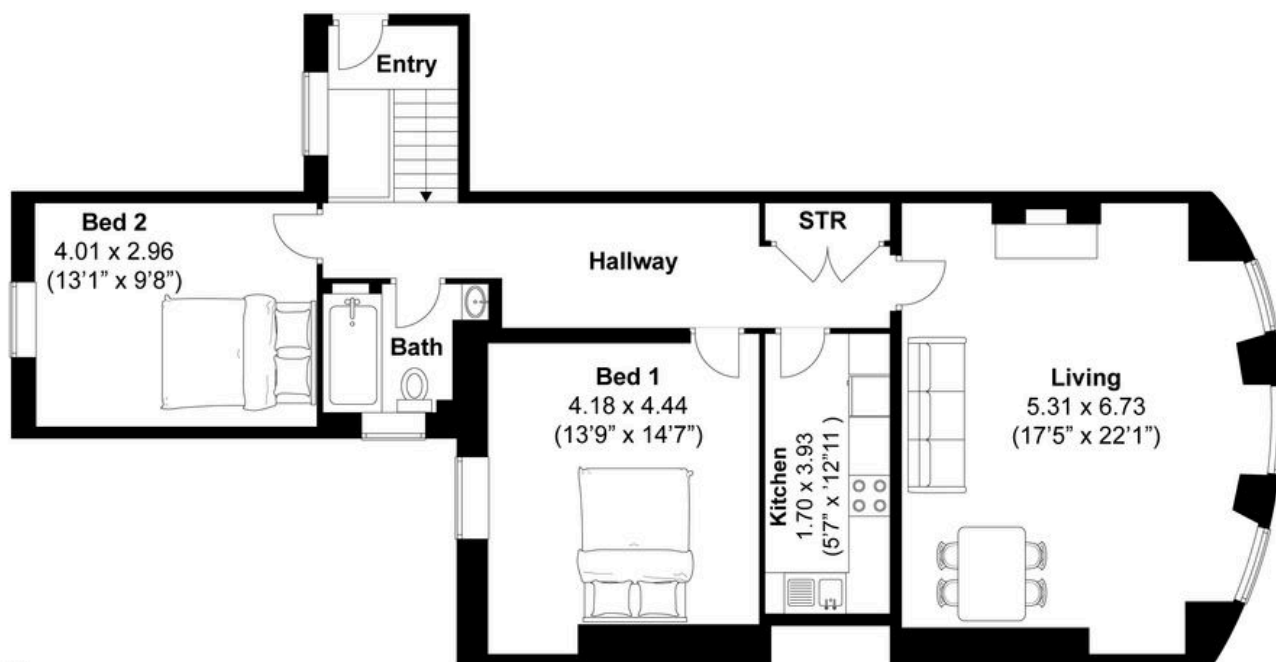
TOTAL FLOOR AREA:

1103 sq. ft. (102.4 sq. m.) approx

Regency Square, Brighton

Approximately 102.4 sqm (1103 sqft)

mishons





Whatever you're looking for...
We'll help you find it.

mishons

✉ sales@mishons.com

☎ 01273 77 88 77

94 Church Road, Hove, BN3 2EB

Monday-Friday: 8:45 am - 6 pm

Saturday: 9 am - 4 pm

Find us on Facebook and Instagram
@wearemishons or visit mishons.com