



*Surrey Street*  
Brighton, BN1 3PA

mishons



## Surrey Street, Brighton – A Light-Filled, Recently Decorated Townhouse Moments from the Station.

Situated on Surrey Street in the heart of Brighton, this well presented mid-terraced home offers stylish, flexible living across four floors – perfect for those seeking space, light, and an unbeatable location.

Having just been recently decorated, the property is vacant and ready for immediate occupation – a great blank canvas for someone to make their own.

As you step through the front door, you're immediately welcomed by an abundance of natural light that flows through the main living level. The living room boasts generous proportions, ideal for both relaxing and entertaining. A staircase leads to the lower ground floor where you'll find an additional versatile space – perfect as a second living area, home office, or utility room, offering that rare and valuable extra level of flexibility.

To the rear, the kitchen is well-equipped with ample worktop space and integrated appliances, creating a functional and stylish environment for cooking. From here, you can access the private rear garden, which is a tranquil spot to enjoy your morning coffee or unwind in the evening.

On the first floor, a large, well-appointed bathroom sits comfortably alongside two spacious double bedrooms. The principal bedroom is positioned at the front, benefitting from the property's attractive period façade and natural light. A staircase leads up to the top floor where you'll find a converted loft room, currently used as a third bedroom but equally suitable as a home office or creative space.

Surrey Street is just seconds from Brighton Station, making this an ideal home for commuters, and with the city centre quite literally on your doorstep, you're never far from Brighton's vibrant shops, cafes, and seafront.

 **Guide Price**   £550,000 – £575,000

3



2



1



D

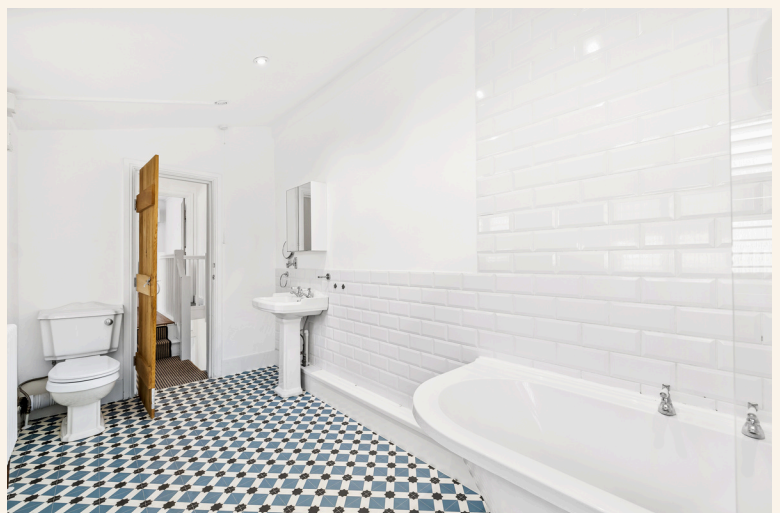
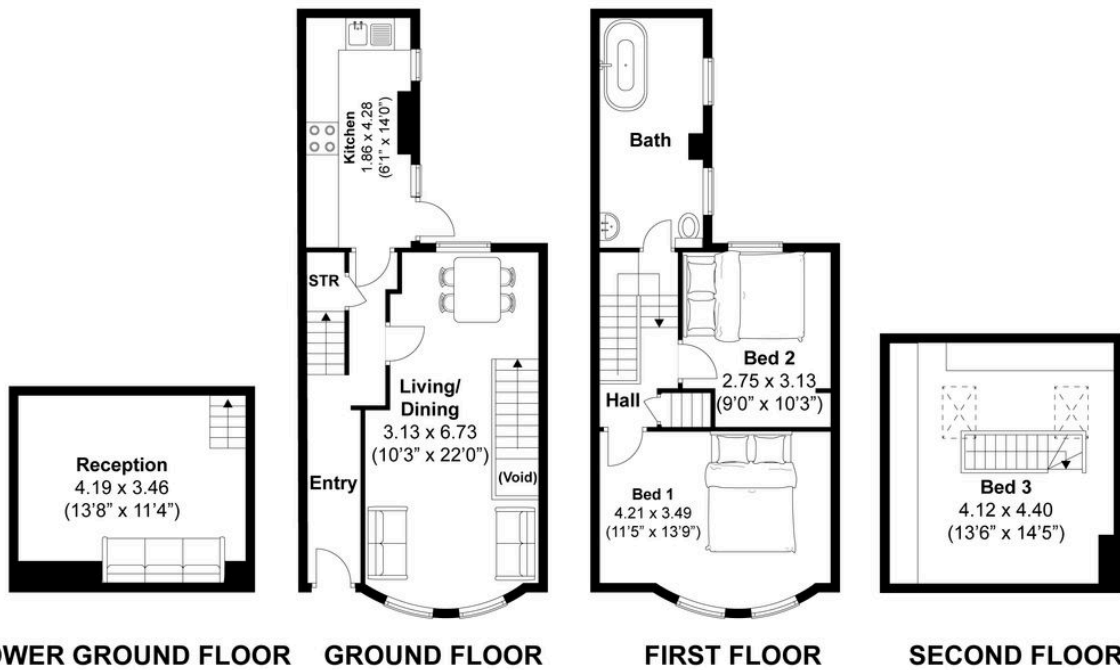




TOTAL FLOOR AREA:  
1088 sq. ft. (101.09 sq. m.) approx

Surrey Street, Brighton  
Approximately 101.09 sqm (1088.12 sqft)

mishons







Whatever you're looking for...  
*We'll help you find it.*

mishons

✉ [sales@mishons.com](mailto:sales@mishons.com)

☎ 01273 77 88 77

94 Church Road, Hove, BN3 2EB

Monday-Friday: 8:45 am - 6 pm

Saturday: 9 am - 4 pm

Find us on Facebook and Instagram  
@wearemishons or visit [mishons.com](http://mishons.com)