



Fleet Street

Brighton

mishons



This stylish apartment is located right on the east side of Brighton station so perfect for commuters and just north of the Laines with all its superb independent shops. This property also has underground private parking.

The building has recently gone under extensive cladding works with scaffolding due down in the coming weeks. As you enter the apartment after coming up in the lift or the communal stairs, the entrance hallway to your flat is impressive.

There is ample room for storage and the sense of space it gives as a first impression is great. All rooms lead off the hallway, the bathroom/wet room is a great size and with a large shower cubicle. The main bedroom is spacious with space for a large bed. There is also lots of storage space in the main bedroom. The second bedroom is currently used by the current owners as an office but can also be used as a second double bedroom. The large open plan kitchen/living room is the hub the home and again has tons of natural light filtering through. The kitchen space has a good amount of work surface space and storage. There is also space for a large dining table.

Downstairs there is underground parking for one car which in the centre of Brighton is a huge bonus.

Temple House on Fleet Street is just a two minute walk to Brighton Station with its direct and fast trains to London. You are on the edge of the famous north laines of Brighton with all its great cafes and restaurants.

Guide Price £390,000

2



1



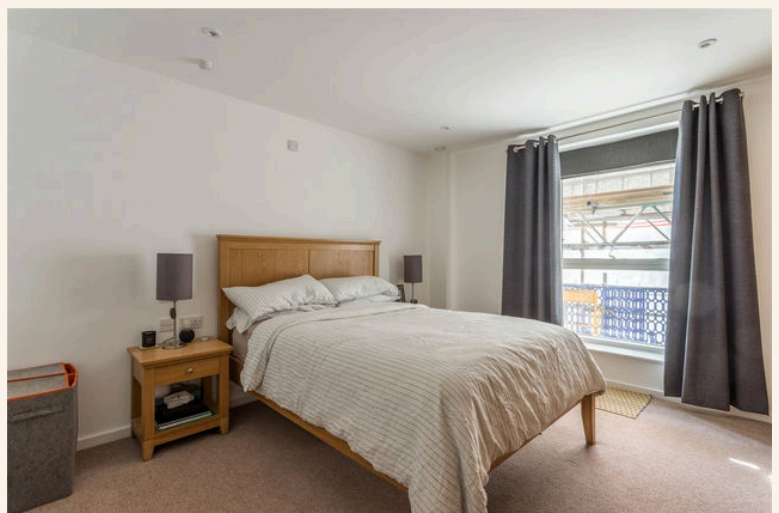
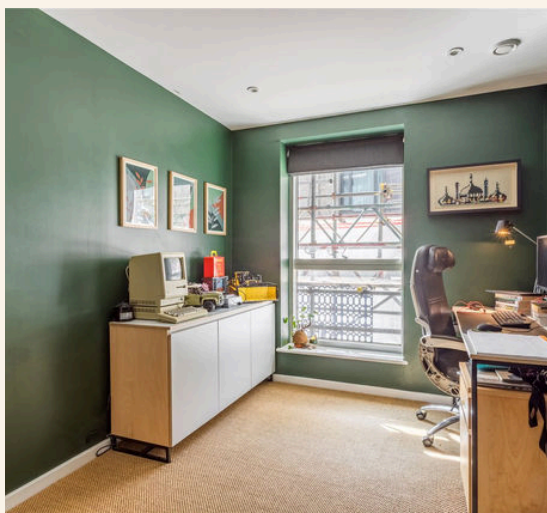
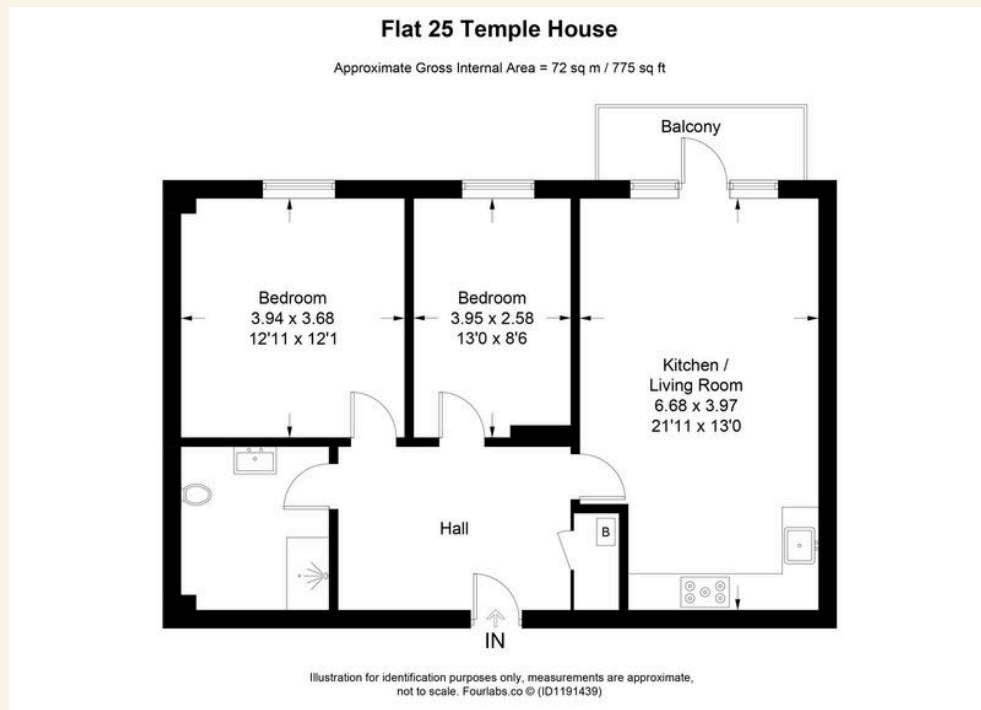
1



B



TOTAL FLOOR AREA:
775 sq. ft. (72 sq. m.) approx





Whatever you're looking for...
We'll help you find it.

mishons

✉ sales@mishons.com

☎ 01273 77 88 77

94 Church Road, Hove, BN3 2EB

Monday-Friday: 8:45 am - 6 pm

Saturday: 9 am - 4 pm

Find us on Facebook and Instagram
@wearemishons or visit mishons.com