



Victory Mews

Brighton Marina

mishons



Stunning Two Bedroom Marina Apartment with Parking & Patio – No Onward Chain

Situated in the highly sought-after marina location, this beautifully presented ground-floor apartment offers an exceptional blend of modern comfort and waterfront charm. With two spacious bedrooms and two contemporary bathrooms, this property is perfect for first-time buyers, downsizers, or investors looking for a prime opportunity. Best of all, it is being sold with no onward chain, ensuring a smooth and hassle-free purchase.

Designed for modern living, the open-plan layout seamlessly connects the lounge, dining, and kitchen areas, creating a bright and airy space ideal for both relaxation and entertaining. Large windows allow for plenty of natural light while offering stunning views over the marina, enhancing the tranquil atmosphere of this waterside retreat.

A great feature of this home is the private patio, a perfect outdoor space to enjoy alfresco dining, unwind with a coffee, or simply take in the picturesque surroundings. Additionally, the property comes with an allocated parking space, offering secure and convenient parking in this desirable location.

With its end-of-chain status, stylish interiors, and unbeatable marina setting, this apartment is a fantastic opportunity for those seeking a stress-free move. Located within easy reach of local amenities, restaurants, and transport links, it delivers both lifestyle and investment appeal.

Don't miss out—schedule a viewing today!

 **Guide Price** £350,000–£375,000

2



1



2

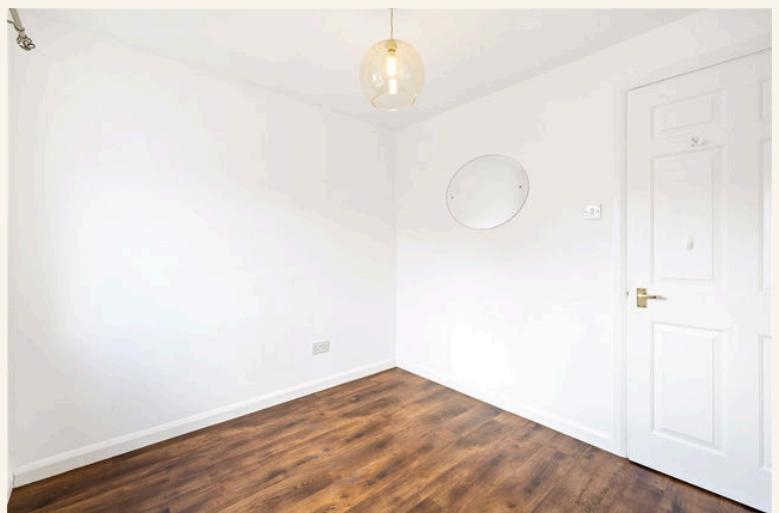


C



TOTAL FLOOR AREA:

632 sq. ft. (58 sq. m.) approx





Whatever you're looking for...
We'll help you find it.

mishons

✉ sales@mishons.com

☎ 01273 77 88 77

94 Church Road, Hove, BN3 2EB

Monday-Friday: 8:45 am - 6 pm

Saturday: 9 am - 4 pm

Find us on Facebook and Instagram
@wearemishons or visit mishons.com