



Woodhouse Road

Hove

mishons



stunning family home...

This beautifully presented four-bedroom home on Woodhouse Road, Hove, offers a wonderful blend of modern living, versatile spaces, and stylish interiors. Perfectly suited for families or professionals, the property boasts a thoughtfully designed layout, an east-facing landscaped garden, off-street parking, and a fantastic outdoor office. Situated in a desirable location, this home provides everything you need for comfort and convenience.

The ground floor is designed for relaxed family living and entertaining. A bright and welcoming living room flows seamlessly into the dining area, creating a sociable and open-plan space. The dining area leads into the conservatory, which enjoys plenty of natural light and overlooks the beautifully landscaped garden. The conservatory provides access to the garden, making it ideal for indoor-outdoor living during the warmer months. The modern separate kitchen is a highlight of the ground floor, featuring sleek cabinetry, high-quality appliances, and ample workspace, perfect for preparing meals and hosting gatherings.

The garden is a tranquil, east-facing haven with landscaped borders and seating areas, offering a perfect retreat to unwind or entertain. The addition of an outdoor office further enhances the garden's appeal, providing a private and quiet workspace away from the main house. On the first floor, you'll find two generously proportioned double bedrooms, both bright and spacious, offering plenty of room for furnishings. There's also a third room, perfect as a home office or single bedroom, providing flexibility to suit your needs. A family bathroom serves this floor, offering practicality and comfort for everyday living.

The second floor is dedicated to a luxurious principal bedroom suite. This beautifully finished space boasts a serene atmosphere and plenty of storage, as well as a stylish en suite bathroom, creating a private retreat at the top of the house. Additional benefits include off-street parking, providing convenience and peace of mind, and a prime location close to excellent schools, local shops, cafes, and transport links. The combination of spacious living areas, modern design, and outdoor space makes this home ideal for those looking for comfort and practicality in a vibrant community.

This exceptional property is not to be missed—contact us today to arrange a viewing and see all that this wonderful home has to offer.

➤ *Guide Price* **£975,000**

4



2



2



D



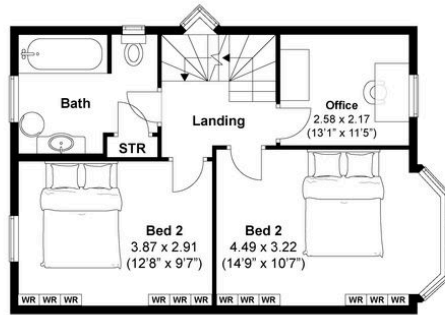
TOTAL FLOOR AREA:

1650 sq. ft. (153 sq. m.) approx

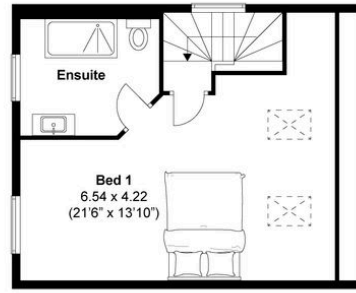
Woodhouse Road, Hove

Approximately 153.34 sqm (1650.5 sqft)

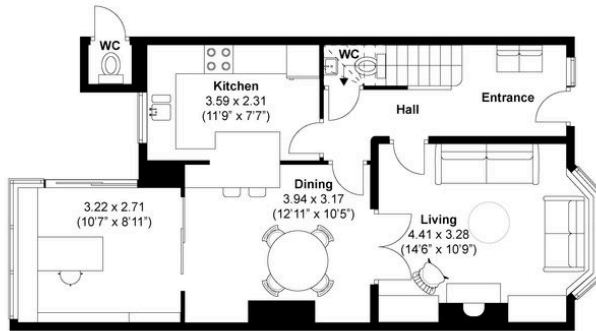
MISNONS



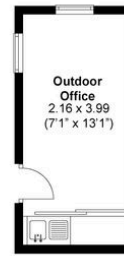
FIRST FLOOR



SECOND FLOOR



GROUND FLOOR



(NOT IN POSITION)



Disclaimer:





Whatever you're looking for...
We'll help you find it.

mishons

✉ sales@mishons.com

☎ 01273 77 88 77

94 Church Road, Hove, BN3 2EB

Monday-Friday: 8:45 am - 6 pm

Saturday: 9 am - 4 pm

Find us on Facebook and Instagram
@wearemishons or visit mishons.com