



Kings Gardens

Hove

mishons



Set within one of Hove's finest examples of a yellow brick Victorian villa, this stunning raised ground floor apartment offers an exceptional blend of period charm, generous proportions, and coastal views.

Measuring just over 1,380 sq ft, the property is a rare find—perfectly positioned moments from Hove Beach, Church Road's vibrant array of shops, cafés, and restaurants, and within easy reach of Hove Station.

Upon entering, you are welcomed by a wide and elegant hallway that sets the tone for the rest of the apartment. The grand living room is an impressive space, flooded with natural light from dual-aspect windows that frame beautiful sea views, high ceilings, and original period detailing that speaks to the home's Victorian heritage.

There are two substantial double bedrooms, including a luxurious master suite with a walk-in wardrobe and a spacious en suite bathroom. The second bedroom also offers excellent proportions, ideal for guests, family, or use as a home office.

This exquisite home is offered with no onward chain and comes with a share of the freehold, providing long-term peace of mind. A unique opportunity to own a piece of Hove's architectural history with the sea on your doorstep.

➤ *Offers over* **£725,000**

2



1



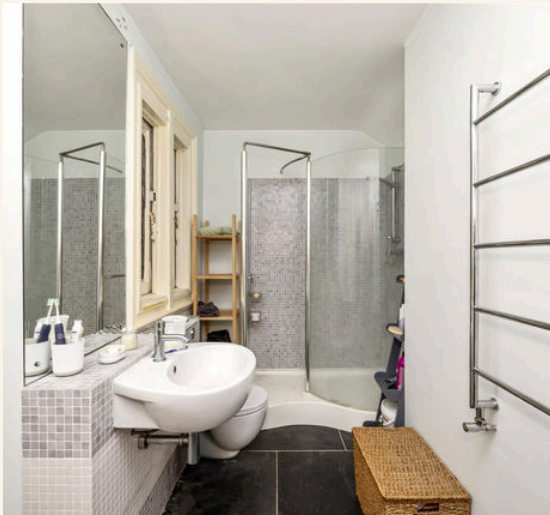
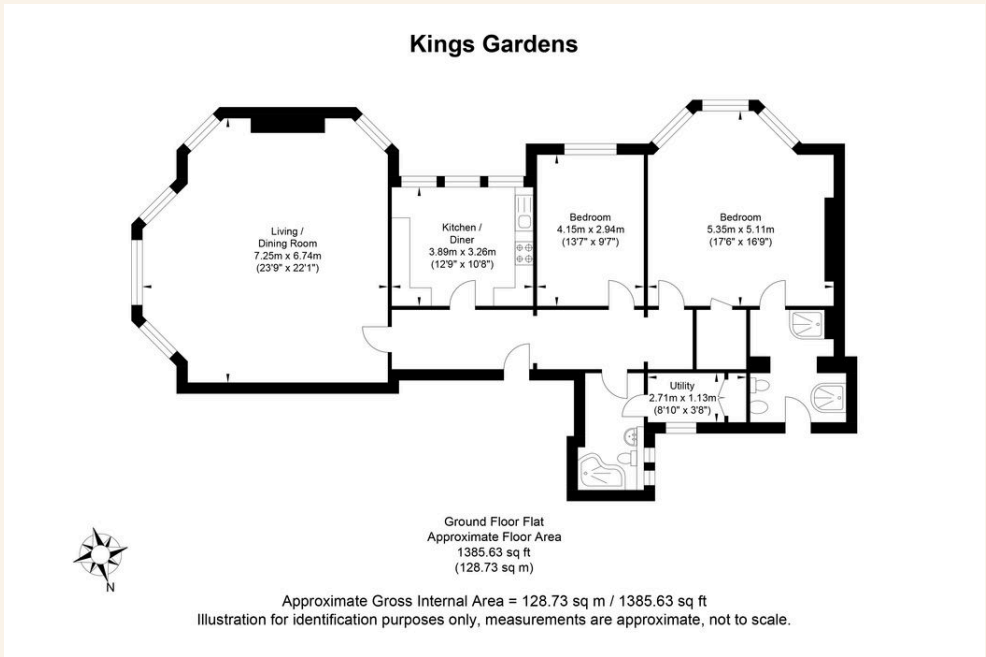
1



tbc



TOTAL FLOOR AREA:
1385 sq. ft. (128 sq. m.) approx





Whatever you're looking for...
We'll help you find it.

mishons

✉ sales@mishons.com

☎ 01273 77 88 77

94 Church Road, Hove, BN3 2EB

Monday-Friday: 8:45 am - 6 pm

Saturday: 9 am - 4 pm

Find us on Facebook and Instagram
@wearemishons or visit mishons.com