



Lewes Crescent

Brighton

mishons



Elegant Grade I Listed Mansion Flat with Panoramic Sea Views – Lewes Crescent, Brighton, with approximately over 1100 sq ft of living space its one not to miss out on.

Perched on the prestigious Lewes Crescent, one of Brighton's most historic and sought-after addresses, this exquisite first-floor mansion flat offers an exceptional blend of Regency grandeur, coastal charm, and modern comfort. Boasting uninterrupted sea views stretching from Kemp Town beach all the way to Brighton Pier, the flat enjoys a commanding position with some of the finest outlooks in the city. The south west-facing balcony provides a perfect vantage point to take in dramatic sunsets over the coastline, while the classic Regency façade and architectural detailing underscore the building's rich heritage.

Inside, the property features:

- Two well-proportioned bedrooms, filled with natural light
- A spacious reception room with floor-to-ceiling sash windows and original period features
- High ceilings and elegant cornicing throughout
- A generous, south west-facing balcony ideal for entertaining or simply enjoying the sea air

As part of the crescent, residents benefit from access to the beautifully maintained private Kemp Town Enclosures – a secluded, landscaped garden square exclusive to the surrounding homes.

Rare to market, this is an outstanding opportunity to own a piece of Brighton's architectural heritage, in a location that is both timeless and vibrant – just moments from the seafront, the independent cafes and shops of Kemp Town Village, and within easy reach of central Brighton.

 **Guide Price** £700,000

2



2



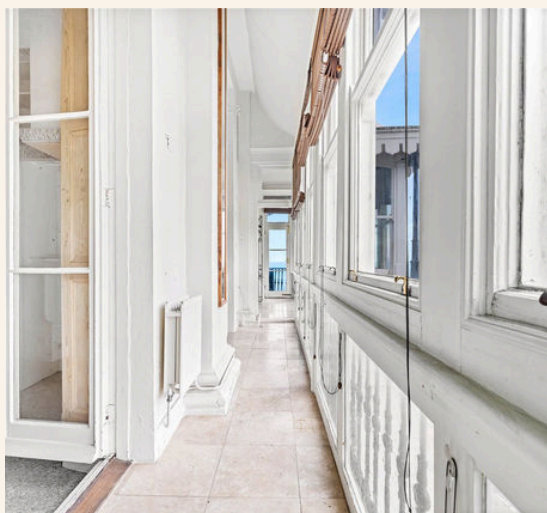
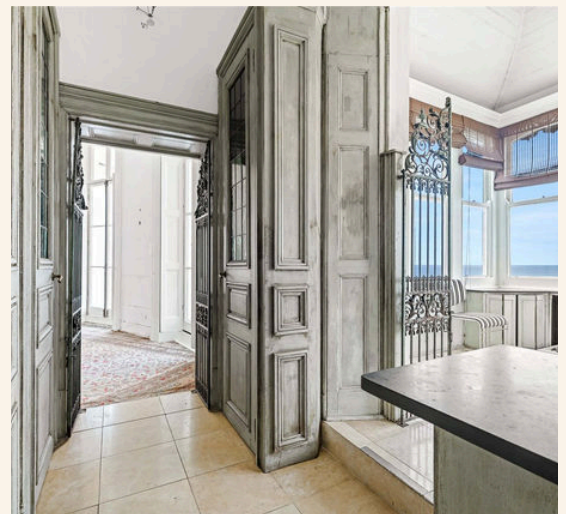
1



n/a



1109 sq. ft. (104 sq. m.) approx





Whatever you're looking for...
We'll help you find it.

mishons

✉ sales@mishons.com

☎ 01273 77 88 77

94 Church Road, Hove, BN3 2EB

Monday-Friday: 8:45 am - 6 pm

Saturday: 9 am - 4 pm

Find us on Facebook and Instagram
@wearemishons or visit mishons.com