



St Catherines Terrace

Hove

mishons



A rare opportunity to acquire a charming lower ground floor flat, nestled within a striking Grade II Listed building on the highly desirable St Catherine's Terrace in Hove.

Offering a perfect blend of period charm and modern living, this property is ideal for those seeking both character and comfort.

The flat comprises a spacious living room, a well-sized bedroom, a contemporary bathroom, and a kitchen/breakfast room. The kitchen is designed with practicality in mind, offering ample space for dining, while the living room provides a cosy, welcoming atmosphere, perfect for relaxing or entertaining.

One of the standout features of this property is its private street entrance, which ensures added privacy and convenience. The real gem of this property, however, is the generous rear courtyard garden. This delightful outdoor space offers an oasis of tranquillity, perfect for enjoying a morning coffee, dining al fresco, or simply relaxing in the sunshine. It's a rare find in such a central location and provides a fantastic space to unwind or entertain.

Situated just moments from Hove's vibrant seafront, local shops, cafes, and excellent transport links, this property benefits from both the quietude of its residential setting and the energy of nearby Hove's amenities, making it the ideal spot for those who love to be close to it all yet enjoy a peaceful retreat at home.

This property is a fantastic opportunity for first-time buyers, investors, or anyone seeking a unique home with outdoor space in an enviable location.

 *Offers over* **£310,000**

1



1



1

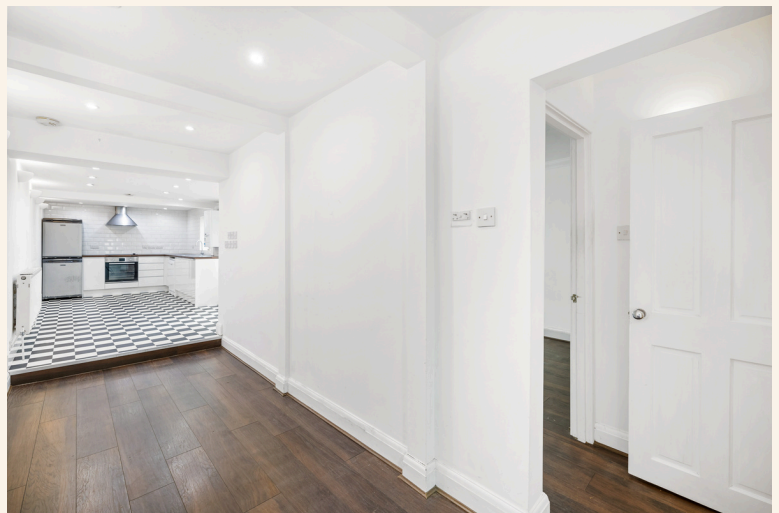
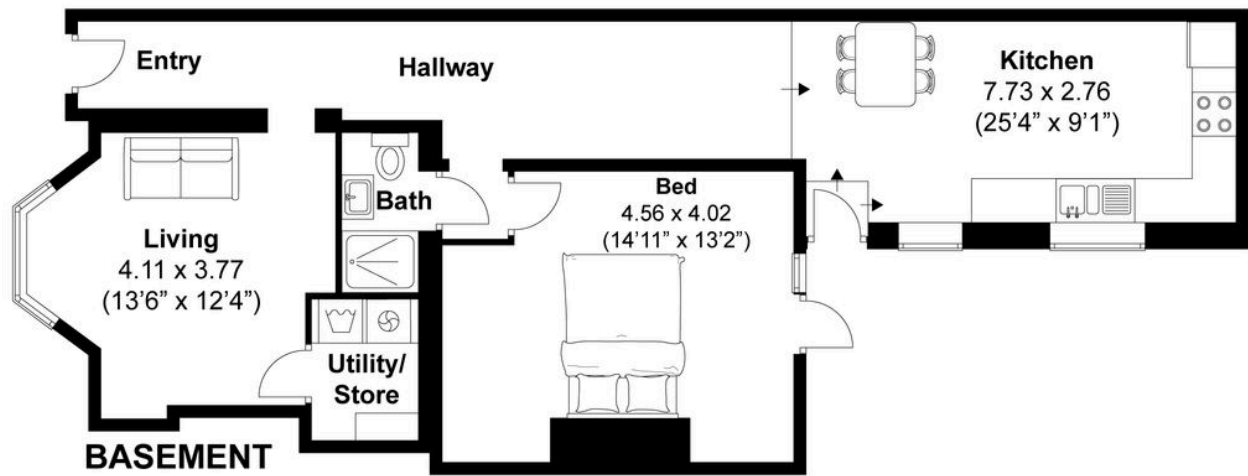


C



TOTAL FLOOR AREA:

854 sq. ft. (79 sq. m.) approx





Whatever you're looking for...
We'll help you find it.

mishons

✉ sales@mishons.com

☎ 01273 77 88 77

94 Church Road, Hove, BN3 2EB

Monday-Friday: 8:45 am - 6 pm

Saturday: 9 am - 4 pm

Find us on Facebook and Instagram
@wearemishons or visit mishons.com