



Selborne Road

Hove

mishons



Set in the heart of Hove on the sought-after Selborne Road, this spacious one-bedroom apartment offers over 720 sq. ft. of floor space.

As you step into the apartment, the large entrance hallway welcomes you with an abundance of natural light. The current owner has cleverly utilized part of this space as a home office area, leaving plenty of room to spare.

The generously sized bedroom boasts ample storage, while an additional room offers further storage options and could serve as a temporary guest space, though it lacks windows.

The modern and contemporary bathroom is ready for immediate use, saving buyers the cost and hassle of renovations. The open-plan living room and kitchen form an 'L'-shaped layout, creating a stylish and sociable space—perfect for entertaining while preparing meals.

Location is another standout feature. Selborne Road sits conveniently between Hove station, with its direct trains to London, and the seafront, all within walking distance. The area is also home to a fantastic selection of popular cafés and restaurants.

➤ *Guide Price* £300,000

1



1



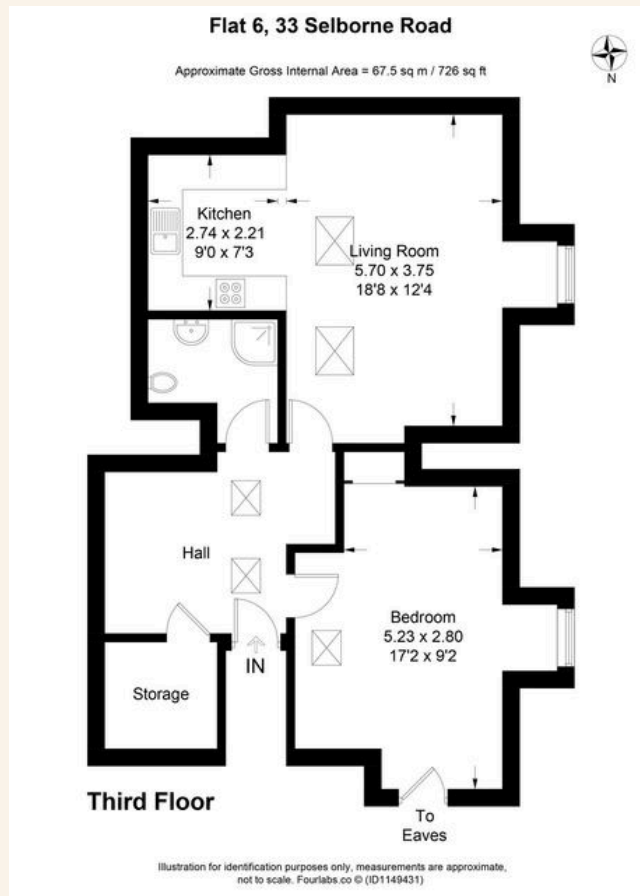
1



D



TOTAL FLOOR AREA:
726sq. ft. (67 sq. m.) approx





Whatever you're looking for...
We'll help you find it.

mishons

✉ sales@mishons.com

☎ 01273 77 88 77

94 Church Road, Hove, BN3 2EB

Monday-Friday: 8:45 am - 6 pm

Saturday: 9 am - 4 pm

Find us on Facebook and Instagram
@wearemishons or visit mishons.com