



Blatchington Hill

Seaford

mishons

Elegant Georgian and Victorian Home

This exquisite Georgian residence, enhanced by later Victorian additions, is a white-rendered masterpiece that seamlessly blends historic charm with contemporary elegance. Boasting over 3,500 sq. ft. of beautifully presented, light-filled living space, the property features an array of character details, including sash windows, an ornate iron veranda, high ceilings, picture rails, and stunning feature fireplaces.

The generous reception hall welcomes you with warm wood flooring that flows into the inviting drawing room, where French doors offer views and access to the serene garden. Across the hall, the formal dining room provides a refined setting for entertaining, leading directly to the kitchen/breakfast room. This charming space, with its rustic brick floor, is anchored by a vintage blue Aga and complemented by Shaker-style cabinetry, marble and wood worktops, and a Belfast sink. Additional practical spaces include a utility room, cloakroom, pantry, and boot room. A delightful garden room, accessible from the boot room, connects seamlessly to the outdoor terrace, extending the living area into the garden.

Upstairs, the first floor features a luxurious principal bedroom with an en suite dressing room (or optional sixth bedroom) and access to a striking ornate balcony. A second spacious bedroom on this floor links to a large bathroom featuring a roll-top bath and a separate shower. The second floor offers three additional bedrooms, a study, and a stylish family bathroom with wall paneling and a freestanding bath. From this level, captivating views of Seaford Head can be enjoyed.

The property is set back from the road behind a high stone wall and timber gates, leading to a gravel driveway that provides ample parking and access to impressive garaging and a dedicated home office. The gardens, meticulously maintained and thoughtfully designed, offer a tranquil retreat with stone walls, a parterre vegetable garden, manicured lawns, mature trees, and vibrant, fragrant borders. A raised paved terrace at the rear provides a perfect spot for al fresco dining while overlooking the delightful 0.39-acre grounds. Nestled within the East Blatchington conservation area, this property is ideally located just a short walk from the South Downs National Park and near renowned landmarks such as Rathfinney Vineyard, Cuckmere Valley, Seven Sisters, and Seaford Head. The town center, with its range of amenities, is nearby, and the charming villages of Alfriston, Glyndebourne, and Charleston are just a short drive away. Commuting is convenient with Seaford's mainline train station offering services to London Victoria and Brighton, while excellent road links via the A259, A26, and A27 connect to Eastbourne, Brighton, and Lewes.

This home represents a rare opportunity to own a distinctive property in a highly sought-after location, offering timeless elegance and modern comfort.

 **Asking Price £1,750,000**

6



5



2



E





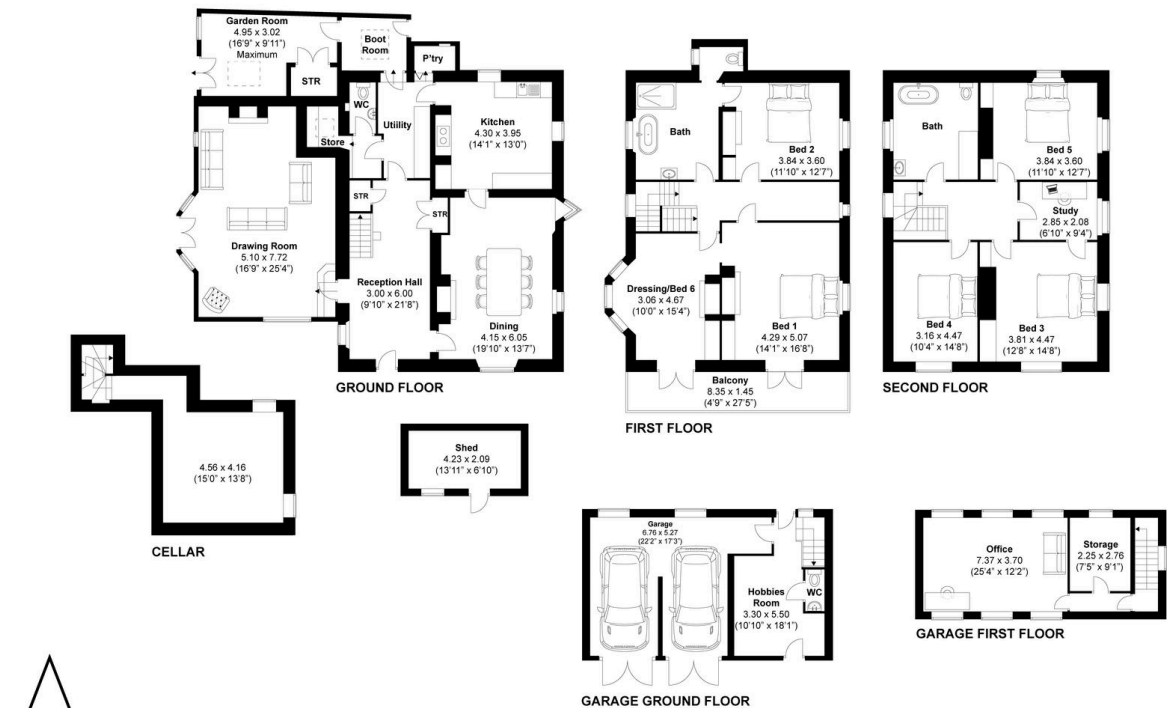




TOTAL FLOOR AREA: 4475 sqft

Blatchington Hill, Seaford
Approximately 416 sqm (4475 sqft)

mishons



Disclaimer:
The measurements are approximate and are for illustration purposes only.
The dimensions are measured internally and in metres and feet. We do not take any responsibility for errors and/or omissions.
If you require further verification please discuss with the buyer/owner of the property.

Created by CENES
www.cenes.co



Exceptional service

We love doing what we do, so it's always done with honesty, energy, and a smile. From marketing to moving, our team is here to guide you, step-by-step, through the process of selling your home. We'll always give you honest opinions and share our local market expertise so that you'll know where you stand at every point of the journey.

Our people are a great team. All pros, brimming with experience and drive. So we promise you all focus and no faff to make sure your sale runs smoothly and hassle-free from start to completion. We'll always keep you in the loop and keep a beady eye on your chain if you're in one so that we can respond to any changes instantly.

And never forget, we're here for you at any time.

Service checklist



Personal, one-to-one service



Expert social media marketing



Honest valuations in line with current market conditions



Professionally designed and printed brochures



Ahead of the game marketing strategies



Daily sales progression



Professional photography



In-house financial advisors

Mishons & their clients give notice that:

1. These sales and particulars do not constitute any part of an offer of contract, and are for the guidance of prospective purchasers only and should not be relied on as statements of fact.
2. No representations are made in these particulars as to the condition of the property or as to whether any service or facilities are in good working order.
3. All Measurements are approximate.



Whatever you're looking for...
We'll help you find it.

✉ sales@mishons.com

☎ 01273 77 88 77

94 Church Road, Hove, BN3 2EB

Monday-Friday: 8:45 am - 6 pm

Saturday: 9 am - 4 pm

Find us on Facebook and Instagram
@wearemishons or visit mishons.com