



Rodmell Avenue

Saltdean

mishons

From the moment you arrive, this exceptional home commands attention. What was once a tired bungalow has been completely transformed into a breathtaking, contemporary family residence spanning over 2,000 sq ft. The striking white render, complemented by anthracite accents and a generous driveway and garage, sets the tone for the luxury within...

Largely arranged over two floors, this beautifully designed home boasts five bedrooms, two bathrooms, and an abundance of living space, all with the most spectacular views!

Step inside and immediately appreciate the meticulous attention to detail that has gone into this transformation. The spacious hallway, illuminated by stylish recessed strip lighting, leads to three generously sized double bedrooms. These rooms share a sleek, ultra-modern family bathroom, ideal for the modern family.

At the heart of the home lies the showpiece kitchen and open-plan living area. Bathed in natural light from its south-facing aspect, this stunning space is truly show-home worthy. The contemporary kitchen features a large island, integrated appliances, and ample worktop space. Flowing seamlessly into the lounge, it's the perfect space to entertain, relax, and enjoy family life, all while enjoying the natural sunlight throughout the day.

The principal bedroom is nothing short of spectacular – a true retreat designed with luxury in mind. This vast space boasts a beautifully crafted walk-in wardrobe, a plush en-suite bathroom, and, most impressively, a bi-folding window framing jaw-dropping panoramic views.. An additional bedroom on this floor provides the perfect guest suite or home office.

The landscaped garden has been designed for both relaxation and entertaining. A stylish terrace offers plenty of space for lounging, complemented by a bespoke outdoor BBQ area. Steps lead down to a private lawn, perfect for children to play, while additional storage and access to the rear of the garage complete this outstanding outdoor space.

This is more than just a house - it's a lifestyle. A flawless blend of contemporary design, family functionality, and breathtaking views, this home is ready to impress.

 **Asking Price** £750,000

5



1



2



C









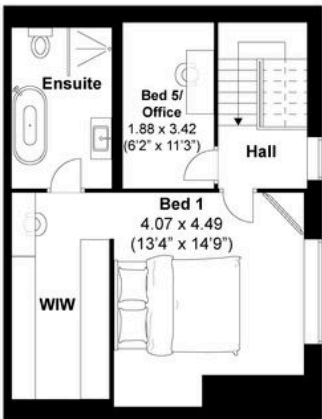
TOTAL FLOOR AREA:
2098.6 sq ft | 194.98 sqm

Rodmell Avenue, Saltdean
Approximately 194.98 sqm (2098.6 sqft)

mishons



GROUND FLOOR



FIRST FLOOR



LOWER FLOOR



Disclaimer:

The measurements are approximate and are for illustration purposes only. The dimensions are measured internally and in metres and feet. We do not take any responsibility for errors and/or omissions. If you require further verification please discuss with the buyer/owner of the property.

Created by CENES
www.cenel.co



Exceptional service

We love doing what we do, so it's always done with honesty, energy, and a smile. From marketing to moving, our team is here to guide you, step-by-step, through the process of selling your home. We'll always give you honest opinions and share our local market expertise so that you'll know where you stand at every point of the journey.

Our people are a great team. All pros, brimming with experience and drive. So we promise you all focus and no fuss to make sure your sale runs smoothly and hassle-free from start to completion. We'll always keep you in the loop and keep a beady eye on your chain if you're in one so that we can respond to any changes instantly.

And never forget, we're here for you at any time.

Service checklist



Personal, one-to-one service



Expert social media marketing



Honest valuations in line with current market conditions



Professionally designed and printed brochures



Ahead of the game marketing strategies



Daily sales progression



Professional photography



In-house financial advisors

Mishons & their clients give notice that:

1. These sales and particulars do not constitute any part of an offer of contract, and are for the guidance of prospective purchasers only and should not be relied on as statements of fact.
2. No representations are made in these particulars as to the condition of the property or as to whether any service or facilities are in good working order.
3. All Measurements are approximate.



Whatever you're looking for...
We'll help you find it.

✉ sales@mishons.com

☎ 01273 77 88 77

94 Church Road, Hove, BN3 2EB

Monday-Friday: 8:45 am - 6 pm

Saturday: 9 am - 4 pm

Find us on Facebook and Instagram
@wearemishons or visit mishons.com