



# *Brunswick Terrace*

Hove

mishons



## Elegant Grade I Listed Seafront Top Floor Apartment with Private Lift Access & Stunning Sea Views

Occupying a prestigious position on the iconic Brunswick Terrace, directly opposite Hove's seafront and just moments from Hove Lawns, this beautifully presented two-bedroom apartment with separate study, offers approximately over a 1000 sq ft of elegant accommodation. A unique feature of this apartment is the lift key that gives sole access to a private entrance foyer and front door. Set within a distinguished Grade I listed Regency building, the property successfully combines period grandeur with stylish contemporary interiors which have been recently re painted throughout and has superb sea views.

The apartment is exceptionally well arranged, with a thoughtfully designed layout that provides a wonderful sense of light, space and privacy. The impressive 18ft living and dining room forms the heart of the home, offering an exceptional space for both entertaining and everyday living. Large sash windows draw in natural light and provide magnificent views of the sea, enhancing the apartment's bright and airy atmosphere. The separate newly installed kitchen is well appointed with sleek high-gloss cabinetry, a generous worktop space, and a large pantry creating a spacious, practical and stylish environment. The kitchen also has fine views of the sea and Hove lawns.

The bedroom accommodation is quietly positioned away from the principal living areas. The spacious main bedroom benefits from bespoke fitted storage, plantation shutters and a luxurious en-suite complete with twin wash basins and a bath with shower. The second double bedroom also features fitted storage and plantation shutters. A well-proportioned family bathroom featuring a large shower serves the second bedroom and guests. A separate study provides an ideal work-from-home environment and offers valuable flexibility for a variety of lifestyle requirements. Further benefits include excellent built-in storage throughout, including spacious loft space.

Brunswick Terrace remains one of Hove's most sought-after addresses, renowned for its elegant Regency architecture and unrivalled coastal setting. Church Road's excellent selection of cafés, restaurants, independent boutiques and everyday amenities are all within easy walking distance, while Hove and Brighton Stations provide convenient rail links to London and beyond.

This is a superb versatile seafront home.

➤ *Asking Price* £600,000

2



1



2



D



TOTAL FLOOR AREA:  
1076 sq. ft. (100 sq. m.) approx

### 29 Brunswick Terrace

Approximate Gross Internal Area = 100.0 sq m / 1076 sq ft

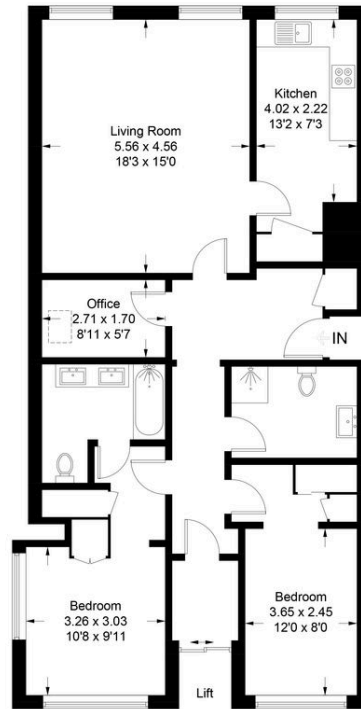


Illustration for identification purposes only, measurements are approximate, not to scale. Fourlabs.co © (ID1308624)





Whatever you're looking for...  
*We'll help you find it.*

mishons

✉ [sales@mishons.com](mailto:sales@mishons.com)

☎ 01273 77 88 77

94 Church Road, Hove, BN3 2EB

Monday-Friday: 8:45 am - 6 pm

Saturday: 9 am - 4 pm

Find us on Facebook and Instagram  
@wearemishons or visit [mishons.com](http://mishons.com)