



Powis Square

BN1 3HH

mishons



Welcome to this enchanting Regency-style maisonette...

...brimming with character and timeless elegance. Located in the prestigious Powis Square, this exquisite home spans three floors and offers just under 1300 square feet of beautifully maintained living space. A hidden surprise is on the top floor, with South facing views..

Upon entering, you are greeted by a sense of history and warmth, with original fireplaces and stunning bay windows that frame picturesque views of the communal gardens. This much-loved property boasts three generously sized bedrooms, providing ample space for family and guests.

The maisonette features two well-appointed bathrooms, ensuring comfort and convenience for all residents. The kitchen, spacious and inviting, is perfect for culinary adventures and entertaining.

As a listed property, this home retains its historical charm while offering modern comforts. It has been cherished over the years by its owners and is now presented to the market free of chain, ready for its next chapter.

Experience the perfect blend of heritage and contemporary living in this remarkable Powis Square residence. Don't miss this rare opportunity to own a piece of regency elegance in a sought-after location.

➤ *Guide Price* £625,000 - £650,000

3



1



2



TBC

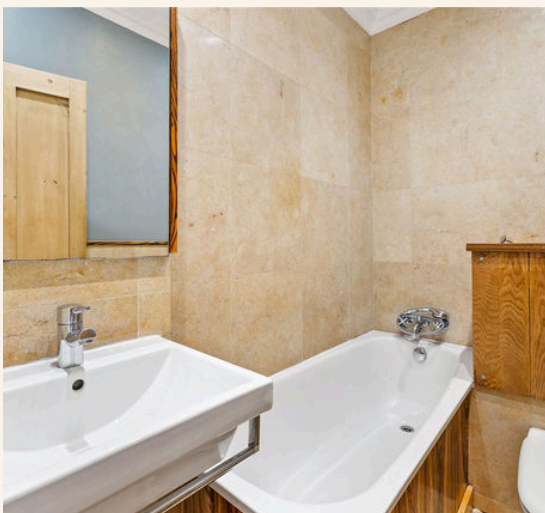


TOTAL FLOOR AREA:
1249.6 sq. ft. (116.09 sq. m.) approx



Disclaimer:

The measurements are approximate and are for illustration purposes only.
The dimensions are measured internally and in metres and feet. We do not take any responsibility for errors and/or omissions.
If you require further verification please discuss with the buyer/owner of the property.





Whatever you're looking for...
We'll help you find it.

mishons

✉ sales@mishons.com

☎ 01273 77 88 77

94 Church Road, Hove, BN3 2EB

Monday-Friday: 8:45 am - 6 pm

Saturday: 9 am - 4 pm

Find us on Facebook and Instagram
@wearemishons or visit mishons.com