



Lansdowne Place

Hove

mishons



Beautifully Presented Two Bedroom Garden Apartment in Prime Hove Location

Set within an elegant period building on the ever-popular Lansdowne Place, this beautifully presented two bedroom lower ground floor apartment offers stylish and spacious accommodation moments from Hove seafront, Western Road and excellent transport links.

The heart of the home is the impressive open plan living/dining/kitchen space, offering a wonderfully sociable layout with ample room for relaxing and entertaining. The contemporary kitchen features wooden worktops, open shelving and a range-style cooker, while the curved bay frontage and large sash windows bring plenty of natural light into the room.

The generous principal bedroom benefits from fitted wardrobes, additional storage and direct access to the private patio courtyard, creating a peaceful retreat. A second bedroom provides excellent flexibility for guests, a home office or nursery. The modern bathroom has been stylishly finished with contemporary tiling and fittings.

Outside, the charming private patio courtyard offers a secluded outdoor space perfect for morning coffee or evening dining, along with useful external storage.

Further benefits include excellent built-in storage throughout, attractive wooden flooring and a highly desirable central Hove location just moments from the beach, cafés, restaurants and local amenities.

➤ *Guide Price* **£450,000**

2



1



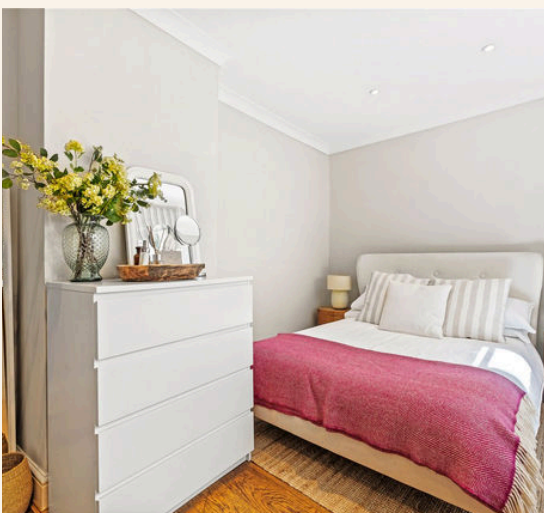
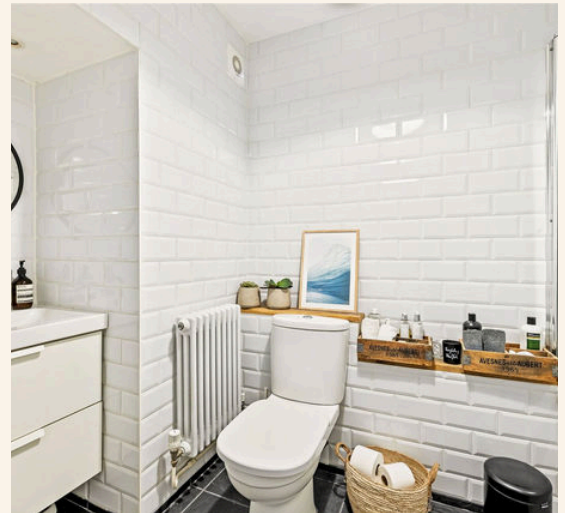
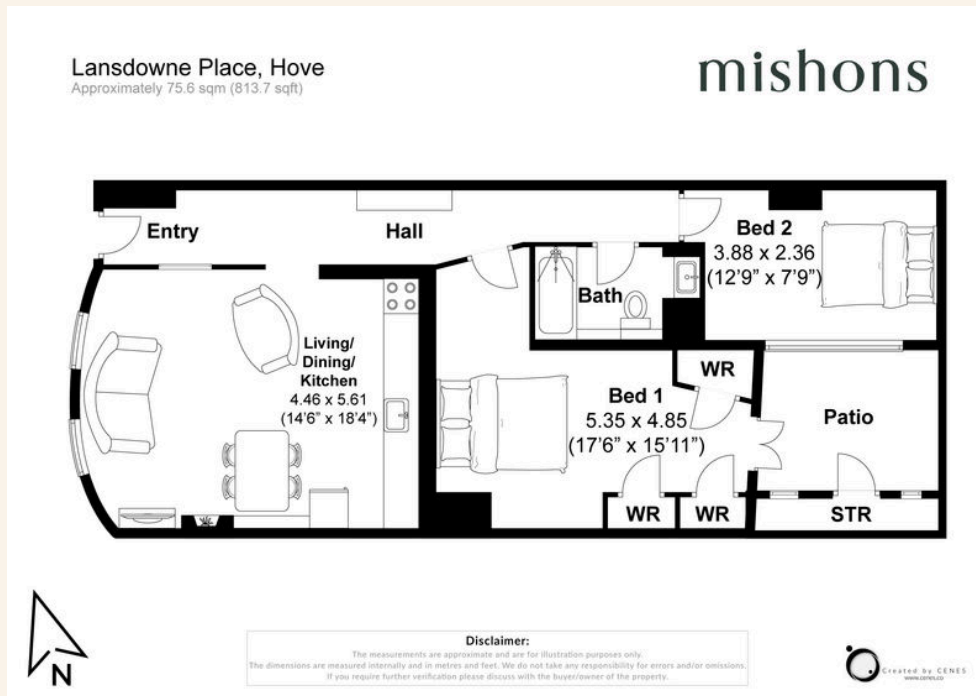
1



tbc



TOTAL FLOOR AREA:
813.7 sq. ft. (75.6 sq. m.) approx





Whatever you're looking for...
We'll help you find it.

mishons

✉ sales@mishons.com

☎ 01273 77 88 77

94 Church Road, Hove, BN3 2EB

Monday-Friday: 8:45 am - 6 pm

Saturday: 9 am - 4 pm

Find us on Facebook and Instagram
@wearemishons or visit mishons.com