



Brunswick Terrace

BN3 1HN

mishons



Nestled within Brunswick Terrace, this exquisite apartment stands as a pinnacle of refined luxury in today's market...

Welcomed by a discreet entrance, one of its many charming attributes, you are guided down a staircase enhanced with 'Baked Earth' terracotta tiles, lush greenery, and majestic festoon lighting, evoking a sense of Mediterranean seclusion.

Stepping inside, the allure continues with original wood flooring that may catch your eye, but it's the elegant 'Dentil' cornicing that truly captivates, as it gracefully adorns every room. The spacious lounge offers a serene retreat, perfect for unwinding with a good book while overlooking the private garden.

The kitchen, a masterpiece of German craftsmanship, showcases Siemens appliances and a 'Quooker' tap, which is seamlessly integrated into the Corian worktops. The expansive island beckons gatherings, providing ample space for culinary adventures paired with a glass of wine... (or two!)

The principal bedroom exudes opulence, boasting bespoke built-in wardrobes and a regal cast iron fireplace, all fit for a super king bed. Meanwhile, the bathroom rivals that of a 5-star London hotel, featuring 'London Mosaic Victorian Tiles', a luxurious overhead 'matki' rain-shower, and a 'Catalano' wall-hung vanity unit for indulgent relaxation.

The chic second bedroom offers a private sanctuary with its en-suite 'matki' shower, parquet underfloor heating, and double-glazed French doors opening onto the terrace. A thoughtful internal window/serving hatch connects seamlessly to the kitchen, perfect for morning rituals.

Completing this exceptional offering are communal amenities including a coal shed and external cupboard, ensuring ample storage for every need.

Experience unparalleled elegance and sophistication at every turn in this remarkable Brunswick Terrace residence, located just seconds from the sea!

➤ *Guide Price* £575,000 - £600,000

2



1



2

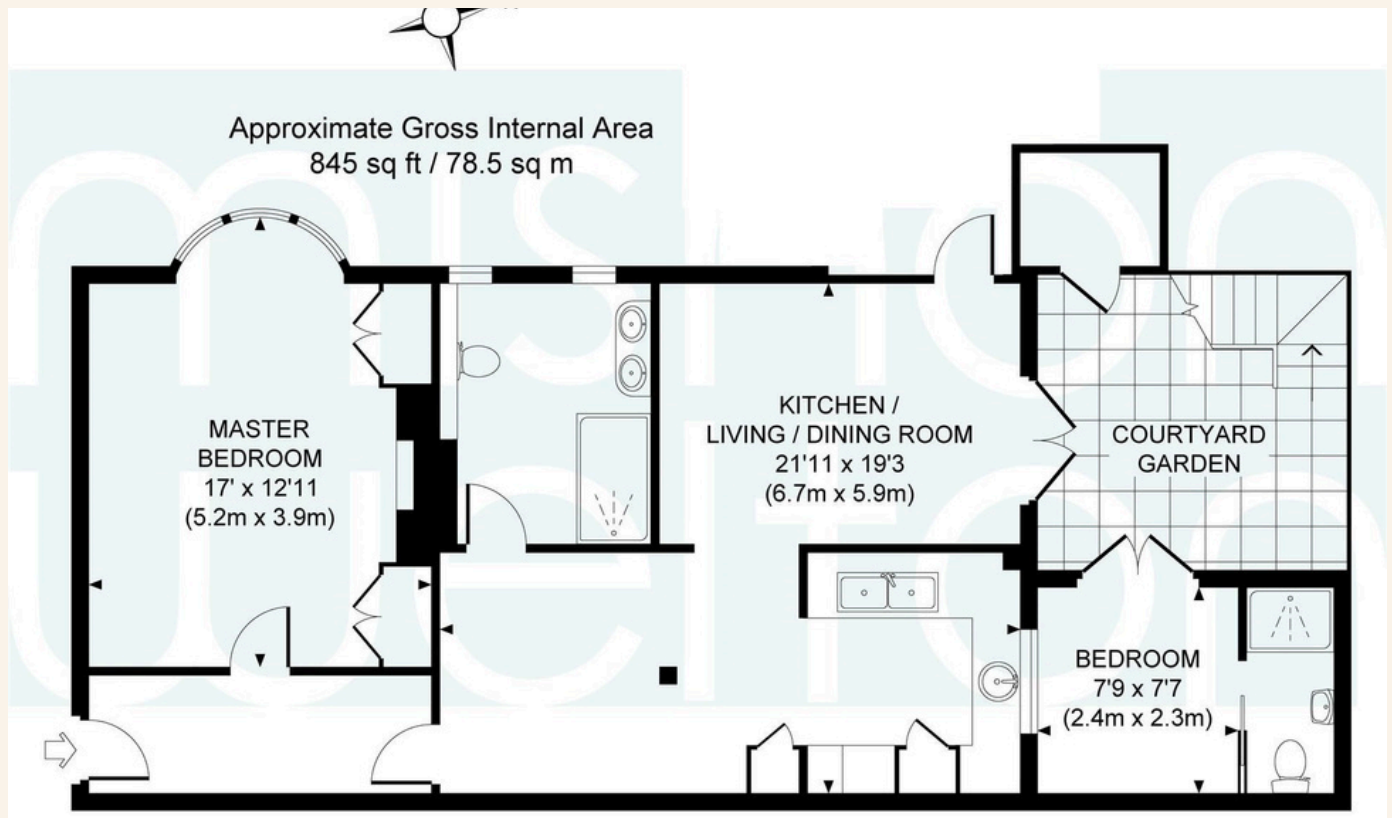


C



TOTAL FLOOR AREA:

845 sq. ft. (78.5 sq. m.) approx





Whatever you're looking for...
We'll help you find it.

mishons

✉ sales@mishons.com

☎ 01273 77 88 77

94 Church Road, Hove, BN3 2EB

Monday-Friday: 8:45 am - 6 pm

Saturday: 9 am - 4 pm

Find us on Facebook and Instagram
@wearemishons or visit mishons.com