



Marine Drive

Brighton, BN2 7GE

mishons

A Seafront Sanctuary of Style, Light and Design

This remarkable seafront home has been shaped through the eyes of both an interior and garden designer, and their influence is immediately felt as soon as you walk through the door. The spaces flow with a cool, bohemian ease, while still feeling warm and inviting, a home that is as much about atmosphere as it is about design.

From its position on the coast, the house captures uninterrupted sea and coastline views, with natural light pouring in and drawing your eye to the horizon. The front of the house is especially impressive, with sunlight streaming through throughout the day, making the interiors feel even more uplifting and expansive.

The heart of the home is an open plan living, dining and kitchen space, where the views become part of the décor itself. A bright conservatory leads seamlessly into the garden, another design statement, beautifully curated with planting, textures and a raised decked seating area that feels both tranquil and inspiring.

The home has already caught the attention of the design world, having been featured in House Beautiful Magazine, and it is easy to see why. Each corner has been thoughtfully finished to a high specification, yet nothing feels contrived, it is a space to be lived in and enjoyed.

Accommodation is generous. The ground floor includes a flexible bedroom or office and a guest WC, while upstairs offers three further double bedrooms and two bathrooms. The principal suite makes the most of the coastal position, with sweeping sea views that shift in mood with the light and weather.

Beyond the house, Rottingdean itself adds to the appeal. This historic seaside village balances charm with community, cricket, croquet and tennis clubs, horse riding, amateur dramatics and an annual arts and music festival give it a lively social scene.

You are a short drive to the centre of Brighton, where the city centre’s shops, restaurants, galleries and cultural life are easily reached. The Undercliff Path runs straight along the coast, a beautiful route for cycling, walking or running direct into town. The beautiful thing is that while this home feels coastal and peaceful, it remains deeply connected to everything the city has to offer.

This is not just a house on the seafront, it is a lifestyle, carefully crafted and beautifully considered, with the sea as its ever changing backdrop.



OIEO

£1,000,000

4



2



2



D









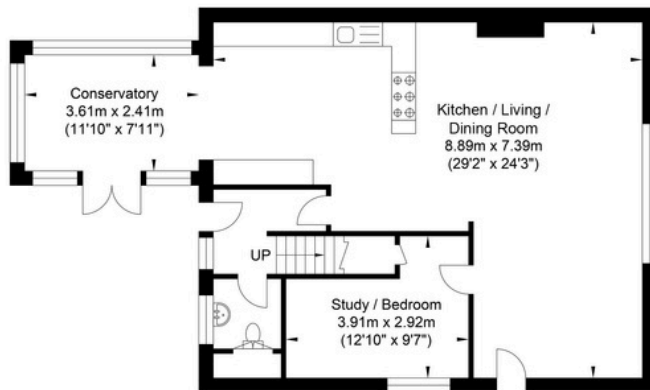
The spaces flow with a cool, bohemian ease, while still feeling warm and inviting, a home that is as much about atmosphere as it is about design...



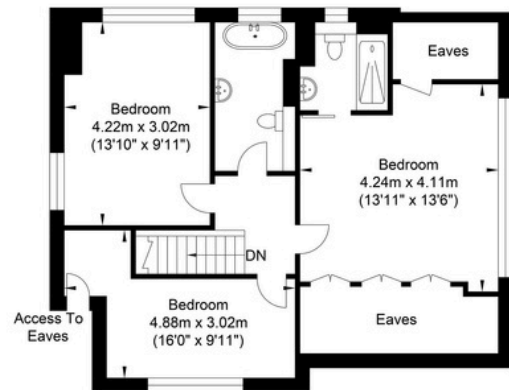
TOTAL FLOOR AREA:

1420.83 sq. ft. (132.0 sq. m.) approx

Marine Drive, Rottingdean



Ground Floor
Approximate Floor Area
808.58 sq ft
(75.12 sq m)



First Floor
Approximate Floor Area
612.25 sq ft
(56.88 sq m)

Approximate Gross Internal Area = 132.0 sq m / 1420.83 sq ft

Illustration for identification purposes only, measurements are approximate, not to scale.



Exceptional service

We love doing what we do, so it's always done with honesty, energy, and a smile. From marketing to moving, our team is here to guide you, step-by-step, through the process of selling your home. We'll always give you honest opinions and share our local market expertise so that you'll know where you stand at every point of the journey.

Our people are a great team. All pros, brimming with experience and drive. So we promise you all focus and no faff to make sure your sale runs smoothly and hassle-free from start to completion. We'll always keep you in the loop and keep a beady eye on your chain if you're in one so that we can respond to any changes instantly.

And never forget, we're here for you at any time.

Service checklist



Personal, one-to-one service



Expert social media marketing



Honest valuations in line with current market conditions



Professionally designed and printed brochures



Ahead of the game marketing strategies



Daily sales progression



Professional photography



In-house financial advisors

Mishons & their clients give notice that:

1. These sales and particulars do not constitute any part of an offer of contract, and are for the guidance of prospective purchasers only and should not be relied on as statements of fact.
2. No representations are made in these particulars as to the condition of the property or as to whether any service or facilities are in good working order.
3. All Measurements are approximate.



Whatever you're looking for...
We'll help you find it.

✉ harry@mishons.com

☎ 07495 69 51 20

94 Church Road, Hove, BN3 2EB

Monday-Friday: 8:45 am - 6 pm

Saturday: 9 am - 4 pm

Find us on Facebook and Instagram
@wearemishons or visit mishons.com