



Ash House

Withdean, BN1

mishons



A split level apartment in the heart of Withdean...

With two bedrooms and nearly 1000 square feet of floor space, this is one buyers or investors will love. This property is also chain free!

As you arrive at the building all residents have parking available. As you step into your private entrance the living room kitchen room is spacious and the large windows let in tons of natural light. The second bedroom and bathroom are on the ground floor and off the living room. The kitchen area has plenty of work surface space and storage.

Upstairs is the main bedroom with its own en-suite shower room. This is a spacious room with lots of space for storage. This apartment comes with a brand new lease of 999 years.

Buyers will be pleased to know you are still only a 20 minute walk to Preston park station with its direct trains to London. You are just a 5 minute drive to get out of the city onto the a23 or a27. You are just a short drive into the centre of Brighton or Hove.



OIEO

£300,000

2



1



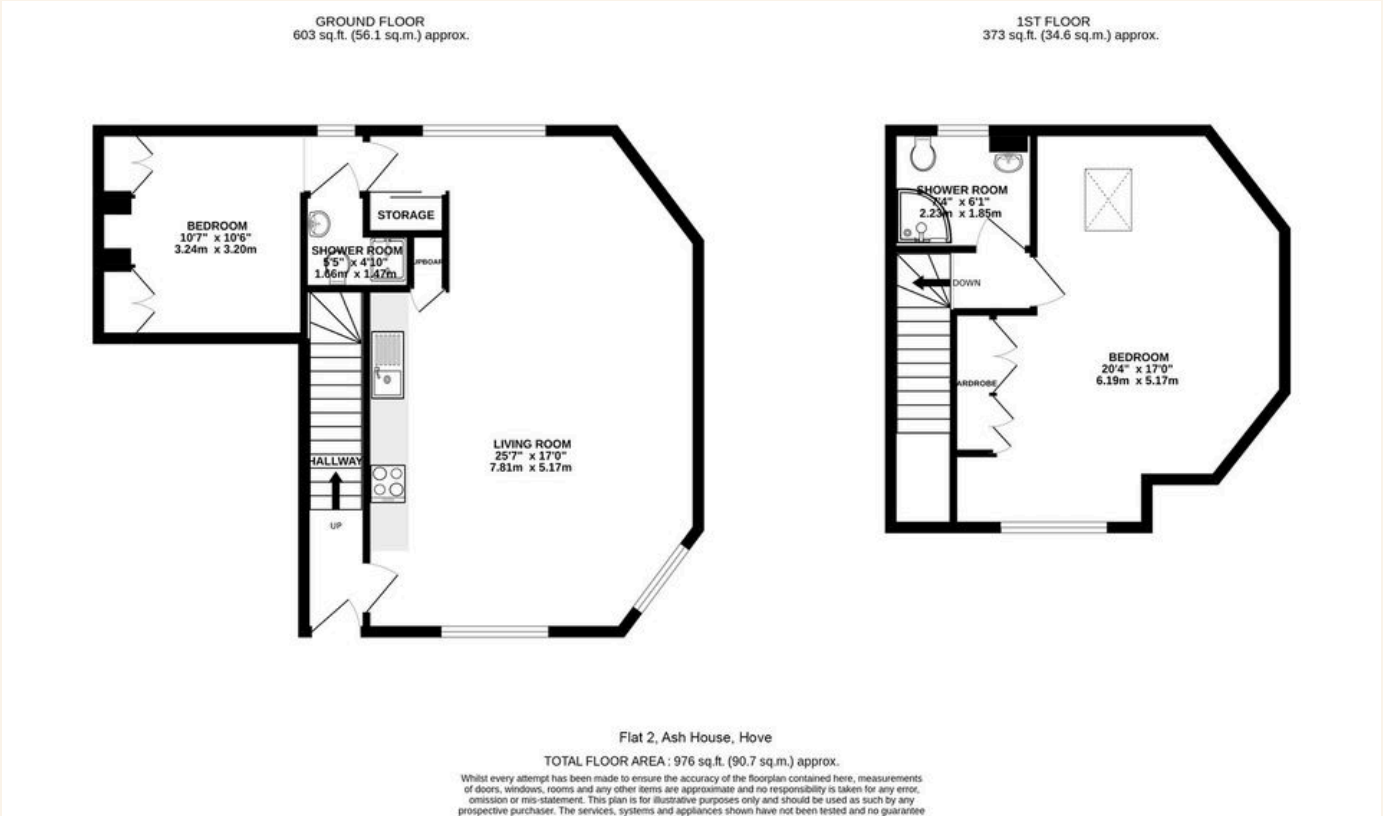
2



C



TOTAL FLOOR AREA:
976 sq. ft. (90.7 sq. m.) approx





Whatever you're looking for...
We'll help you find it.

mishons

✉ sales@mishons.com

☎ 01273 77 88 77

94 Church Road, Hove, BN3 2EB

Monday-Friday: 8:45 am - 6 pm

Saturday: 9 am - 4 pm

Find us on Facebook and Instagram
@wearemishons or visit mishons.com