

The Drive,
Hove, BN3 3PF

guide price

£350,000

mishons

mishonwelton.com





leasehold energy
efficiency rating

D

Set in the heart of Hove just a short walk from the seafront and Hove Station, this upper floor apartment with two bedrooms and a balcony with some lovely views of Hove.

Once you leave the lift and enter the apartment you are greeted with a wide spacious entrance hallway with lots of space for storage. All of the rooms lead off the hallway. The first room to your right is the main bedroom, this is a good sized double bedroom with built in wardrobes plus space for more freestanding storage if you wish. The second bedroom is also a double room perfect for guests, office or children's room. This also has built in storage. Back out into the hallway and straight ahead is the kitchen area. This is to the front of the building and overlooks The Drive, this room gets lots of natural light. There are lots of cupboard space and built in appliances. The separate living room is also at the front of the building, again, this has lots of natural light flooding through. The balcony leads off the living room and has enough space for a small table and chairs to enjoy a summers day/evening.

The Drive is set just a ten minute walk to Hove Station with its direct trains to London and also a short walk to Hove lawns and the beach. The cafes and restaurants of Church Road are just a five minute walk away.



exceptional service

Our team will guide you through the process of buying or selling your home.

We have a team of dedicated sales progressors in place to ensure your purchase or sale runs smoothly through to completion, keeping you in the loop and a close eye on your chain while moving you in as swiftly and smoothly as possible.

- Honest valuations in current market conditions
- Dedicated sales progression team
- Recommended financial advisors
- 5* service from valuation to completion
- Award winning lettings service
- Ahead of the game marketing strategies
- Professional photography
- Social media marketing
- Top listings on Rightmove and Zoopla

call us for a free
valuation on your
property

sales@mishons.com

Church Road | Hove | BN3 2EB

22 Hereford Court

Approximate Gross Internal Area = 75.9 sq m / 817 sq ft

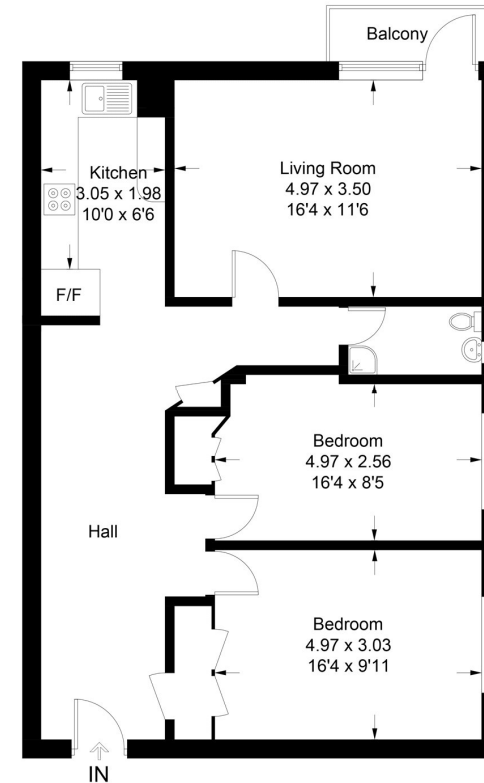


Illustration for identification purposes only, measurements are approximate, not to scale. Fourlabs.co © (ID1166647)

Mishons & their clients give notice that:

1. These sales and particulars do not constitute any part of an offer of contract, and are for the guidance of prospective purchasers only and should not be relied on as statements of fact.
2. No representations are made in these particulars as to the condition of the property or as to whether any service or facilities are in good working order.
3. All Measurements are approximate.

Zoopla

PrimeLocation

rightmove