



*Pembroke Crescent,*  
Hove, BN3

mishons

# Presenting a stunning six-bedroom, four-bathroom semi-detached home nestled in one of Hove's most coveted locations, Pembroke Crescent...

This residence has undergone extensive modernization, resulting in a harmonious blend of contemporary luxury and timeless charm.

Step into the spacious front lounge, adorned with lofty ceilings, bay windows, and a captivating feature fireplace, creating an elegant ambiance perfect for gatherings or quiet evenings in. The extended modern kitchen is a culinary masterpiece, boasting sleek finishes and glass-to-ceiling doors that lead out onto the south-facing landscaped rear garden, offering an idyllic retreat for outdoor living. Notably, the lounge also grants direct access to this enchanting outdoor space, seamlessly merging indoor and outdoor living.

Ascending to the first floor, discover three generously proportioned double bedrooms and two pristine bathrooms. The master suite exudes opulence, featuring a sizable modern en-suite bathroom and a coveted walk-in wardrobe, offering a private sanctuary of comfort and style.

Venturing to the top floor reveals two additional double bedrooms, connected by a convenient Jack and Jill en-suite bathroom, providing versatility and functionality to accommodate various lifestyle needs. Throughout the home, natural light floods every corner, enhancing its allure and creating an atmosphere of warmth and vitality.

Convenience meets practicality with a shared driveway to the side of the home, offering the option to add off-street parking to the front, ensuring ease of access for residents and guests alike. Sold with no onward chain, seize the opportunity to make this exceptional property your own and embark on a lifestyle of unparalleled comfort and sophistication in one of Hove's most sought-after locales.

 *Guide Price* £1,650,000 - £1,750,000

---

5



2



4



D













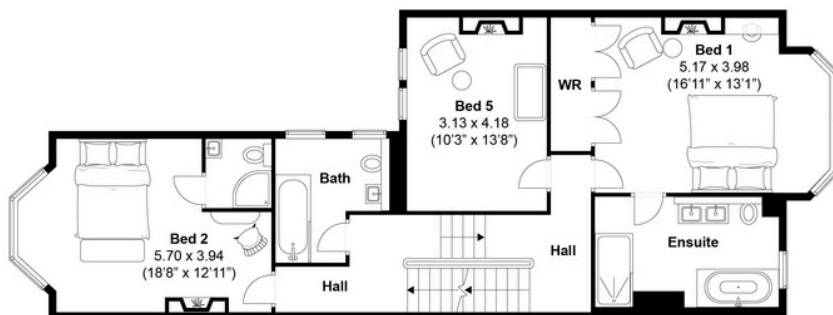




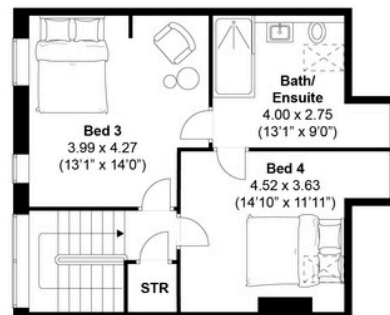
TOTAL FLOOR AREA:  
2411 sq. ft. (234 sq. m.) approx

Pembroke Crescent, Hove  
Approximately 234 sqm (2411 sqft)

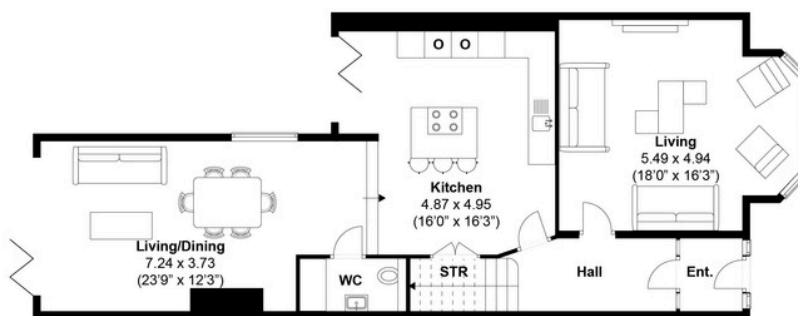
mishons



FIRST FLOOR



SECOND FLOOR



GROUND FLOOR



**Disclaimer:**

The measurements are approximate and are for illustration purposes only.  
The dimensions are measured internally and in metres and feet. We do not take any responsibility for errors and/or omissions.  
If you require further verification please discuss with the buyer/owner of the property.

Created by GENES  
www.genes.co



# Exceptional service

We love doing what we do, so it's always done with honesty, energy, and a smile. From marketing to moving, our team is here to guide you, step-by-step, through the process of selling your home. We'll always give you honest opinions and share our local market expertise so that you'll know where you stand at every point of the journey.

Our people are a great team. All pros, brimming with experience and drive. So we promise you all focus and no faff to make sure your sale runs smoothly and hassle-free from start to completion. We'll always keep you in the loop and keep a beady eye on your chain if you're in one so that we can respond to any changes instantly.

And never forget, we're here for you at any time.

## Service checklist



Personal, one-to-one service



Expert social media marketing



Honest valuations in line with current market conditions



Professionally designed and printed brochures



Ahead of the game marketing strategies



Daily sales progression



Professional photography



In-house financial advisors

---

### *Mishons* & their clients give notice that:

1. These sales and particulars do not constitute any part of an offer of contract, and are for the guidance of prospective purchasers only and should not be relied on as statements of fact.
2. No representations are made in these particulars as to the condition of the property or as to whether any service or facilities are in good working order.
3. All Measurements are approximate.





Whatever you're looking for...  
*We'll help you find it.*

✉ [sales@mishons.com](mailto:sales@mishons.com)

☎ 01273 77 88 77

94 Church Road, Hove, BN3 2EB

Monday-Friday: 8:45 am - 6 pm

Saturday: 9 am - 4 pm

Find us on Facebook and Instagram  
@wearemishons or visit [mishons.com](http://mishons.com)