



Arundel House, The Drive

Hove, BN3 3JD

mishons



Situated in the sought-after Drive, this apartment is within immediate proximity of all amenities and the seafront. It is evident that this residence is a historical gem and indeed is believed to be the first purpose-built block in Hove.

Measuring just under 2400sq ft, this wonderful property has plenty to offer. From the moment you enter you are greeted with a glorious and welcoming entrance hallway which is one not to be missed. Boasting four comfortable double bedrooms, separate study and large kitchen breakfast room, this glorious period apartment is a must see.

Set in the grandeur of this distinctive red brick Victorian building, contemporary interior design blends seamlessly with a host of original features dating back to 1898. Rumored to be the guest accommodation for those attending parties at the Royal Pavilion in days gone by. A truly magnificent four/five-bedroom mansion apartment occupying the first floor of one of Hove's most distinguished Victorian buildings. Positioned on the prestigious The Drive, just moments from the seafront and everything that makes central Hove so desirable, this remarkable home forms part of what is believed to be the first purpose-built apartment building in Hove.

Spanning just under 2,400 sq ft, the apartment offers an exceptional sense of space and character throughout. From the moment you step inside, the impressive entrance hallway creates an immediate feeling of grandeur, setting the tone for the rest of the home. The layout offers four generous double bedrooms, a separate study that could easily serve as a fifth bedroom if required, a spacious kitchen breakfast room, and elegant reception spaces ideal for both entertaining and everyday living.

Set within this striking red-brick Victorian landmark, the interiors beautifully balance contemporary styling with a wealth of original period detail dating back to 1898. Rich in architectural character, the building is a fine example of Jacobean Revival design, complete with castellated towers, turrets, mullioned windows, and intricate brickwork. Local folklore even suggests the building once provided guest accommodation for visitors attending lavish gatherings at Brighton's Royal Pavilion.

Life on The Drive offers the very best of Hove living. The sea is literally at the end of the road, perfect for morning walks along the promenade or an evening swim during the summer months. Some of Hove's best-loved local spots are all within easy walking distance, including Canham & Sons Butchers, Baked café and restaurant, and the ever-popular Fourth & Church wine bar and eatery. Hove Station is also within easy reach for commuters, offering direct links into London and beyond.

Please note: some furnishings and décor within the property may have changed since the marketing photographs were taken, so the apartment may appear slightly different upon viewing., this historic building with its pinnacle and castellated tower, turrets, and mullion windows, is a fantastic architectural example of the Jacobean Revival style.

Hove bustles with artisan bakers, independent cafes and a multitude of restaurants. Nearby pedestrianised George Street continues likewise with its lively pavement café scene. With Hove's wide promenade just a short stroll away you're never too far from fresh sea air. And if you're looking to catch the train, Hove mainline station is 0.5 miles away with direct trains to the capital.

➤ **Asking Price** £980,000

4/5



2/3



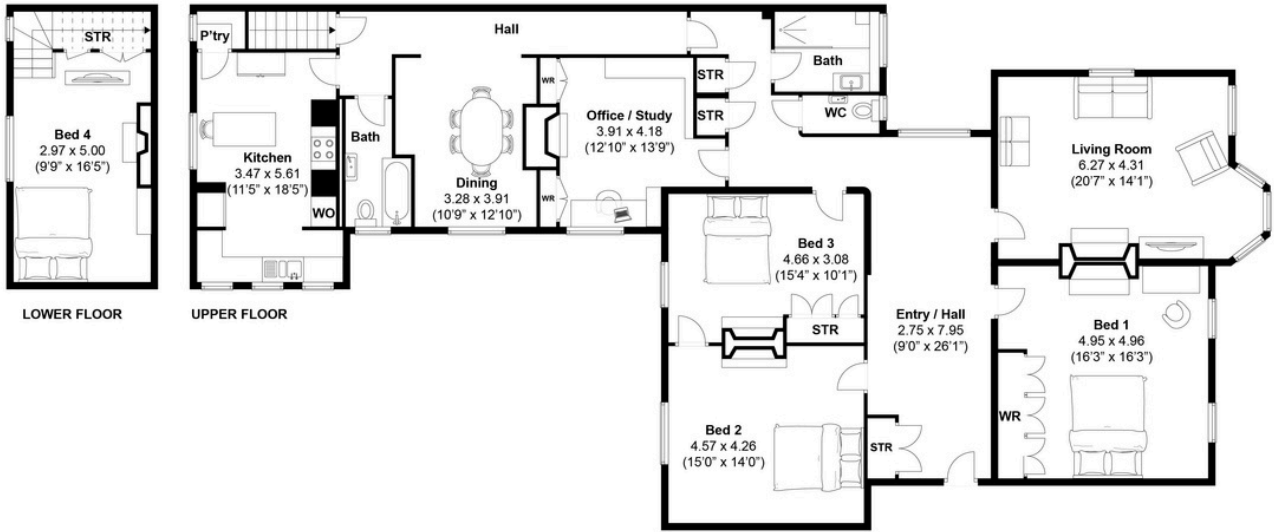
2



TBC



TOTAL FLOOR AREA:
2337.9sq. ft. (217.2 sq. m.) approx



Disclaimer:

The measurements are approximate and are for illustration purposes only.
The dimensions are measured internally and in metres and feet. We do not take any responsibility for errors and/or omissions.
If you require further verification please discuss with the buyer/owner of the property.





Whatever you're looking for...
We'll help you find it.

mishons

✉ sales@mishons.com

☎ 01273 77 88 77

94 Church Road, Hove, BN3 2EB

Monday-Friday: 8:45 am - 6 pm

Saturday: 9 am - 4 pm

Find us on Facebook and Instagram
@wearemishons or visit mishons.com