



Osborne Road

Brighton, BN1 6LR

mishons



Blessed with wonderful westerly views across Brighton, this lovely family home is one not to be missed.

Arranged over four floors offering plenty of accommodation with original features and beautiful fireplaces still retaining . The ground floor offers a cosy lounge area and a separate reception room (which is currently being used as a bedroom).

The kitchen has double doors which lead out onto the decked rear garden with breathtaking views across the city. The cellar is the ideal space for utilities and there is plenty of storage space on offer. The first floor occupies three comfortable double bedrooms and the family bathroom. There is space in the loft to extend which would create another bedroom and ensuite if required.

Perfect for commuters as the station serving Gatwick and London is a 4 minute drive. This sought after location is known for its variety of friendly cafés, bistro pubs and small shops which include little supermarkets. Surrounded by parks which have playgrounds, cafes and sports facilities it will be easy to meet people if you are new to the area. Don't forget that parks here host events during our famous festivals, too. Local schools are fantastic and within a short stroll away. Downland bike trails and woodland treks are easily accessible and the National Park bordered by beaches is just a short drive. The vibrant arts venues, stunning restaurants and cosmopolitan shopping of the city are all quick to get to by bus or by cab and for those who need a car, there's easy access to the A23/A27 and Zone F.

➤ *Offers Over* £715,000

4



1



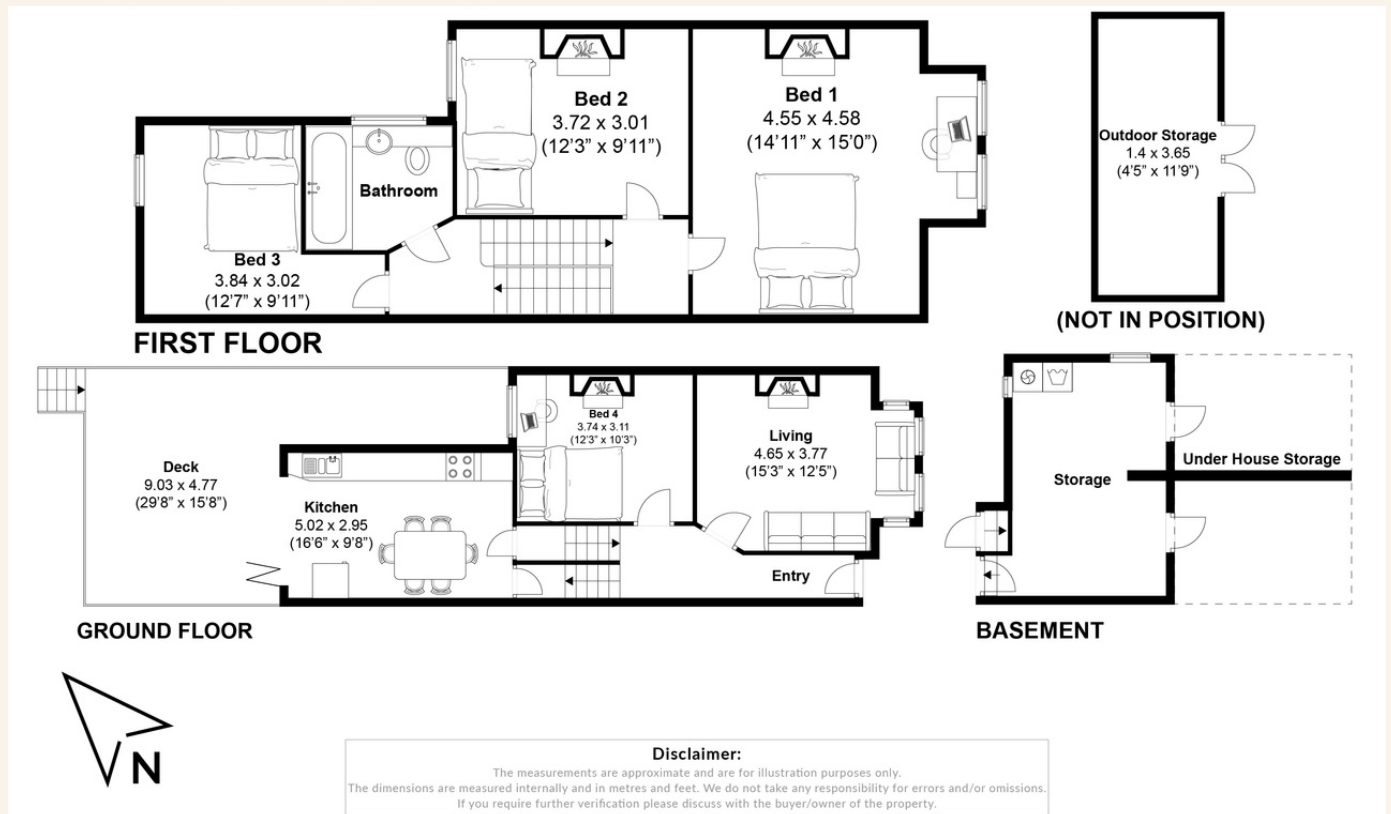
1



TBC



TOTAL FLOOR AREA:
1358.4 sq. ft. (126.2 sq. m.) approx





Whatever you're looking for...
We'll help you find it.

mishons

✉ sales@mishons.com

☎ 01273 77 88 77

94 Church Road, Hove, BN3 2EB

Monday–Friday: 8:45 am – 6 pm

Saturday: 9 am – 4 pm

Find us on Facebook and Instagram
@wearemishons or visit mishons.com