



The Drive

Hove

mishons



Occupying the top floor of an attractive and well-maintained building on one of Hove's most prestigious tree-lined avenues, this impressive four bedroom apartment offers exceptionally generous accommodation

Rarely available in such a sought-after central Hove location, the property combines elegant proportions, practical living space and modern convenience.

The apartment is beautifully arranged with a spacious and welcoming central hallway providing access to all principal rooms. The standout living room is wonderfully bright and expansive, featuring ample space for both formal entertaining and relaxed day-to-day living. Large windows enhance the sense of space and natural light throughout, while the separate dining room provides an ideal setting for hosting guests.

The kitchen is well-appointed with a practical layout and excellent storage, perfectly suited for modern living. All four bedrooms are generously proportioned and offer excellent versatility. The impressive principal bedroom benefits from a modern ensuite bathroom, while the remaining bedrooms are served by a stylish contemporary family bathroom finished to a high standard.

Further benefits include lift access directly into the to the penthouse, excellent built-in storage, gas central heating and the advantage of a top floor position, creating a peaceful and private atmosphere throughout.

The Drive is widely regarded as one of Hove's premier residential addresses, ideally located just moments from Hove seafront, Church Road's vibrant selection of cafes, restaurants and boutiques, as well as excellent transport links including Hove Station.

Offering a superb combination of size, location and convenience, this exceptional apartment presents a rare opportunity to acquire a substantial home in the heart of Hove

➤ **Asking Price** £825,000

4



1



2

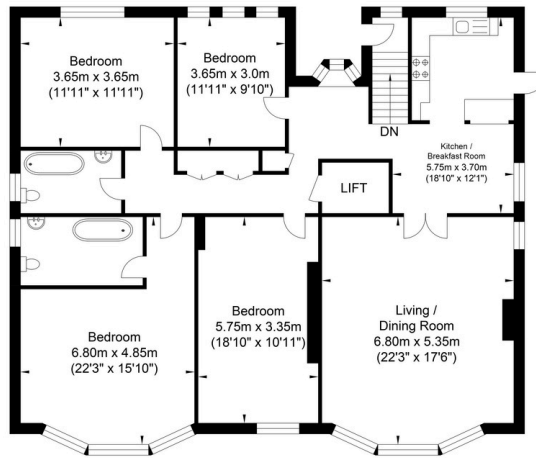


D



TOTAL FLOOR AREA:
1678.84 sq. ft. (155.97 sq. m.) approx

The Drive, Hove



Ground Floor
Approximate Floor Area
1678.84 sq ft
(155.97 sq m)

Approximate Gross Internal Area = 155.97 sq m / 1678.84 sq ft
Illustration for identification purposes only, measurements are approximate, not to scale.





Whatever you're looking for...
We'll help you find it.

mishons

✉ sales@mishons.com

☎ 01273 77 88 77

94 Church Road, Hove, BN3 2EB

Monday-Friday: 8:45 am - 6 pm

Saturday: 9 am - 4 pm

Find us on Facebook and Instagram
@wearemishons or visit mishons.com