



Adelaide Crescent

Hove, BN3 2JH

mishons



Mishons is delighted to offer for sale, this beautifully presented, raised ground floor apartment in the heart of Hove...

..The imposing, yet charming period property was built in the mid-nineteenth century and is a stones throw away from the Hove seafront.

The apartment itself is a fine example of old-meets-new, with contemporary touches complimenting the many original features that property showcases.

Upon entry, you are greeted by a large entrance hallway with multiple storage on offer, including access to a large, boarded loft space.

Through to the east-facing, open plan living area, in addition to an abundance of natural light, you have a beautifully decorated lounge with original parquet flooring and dining area across from the modern kitchen.

At the rear of the apartment, there are two double bedrooms, both tastefully decorated.

There is also a modern, three-piece bathroom suite, finished to a very good standard.

When you leave the front door of the property, in a few steps you will find a beautiful, large green space on offer where you can take in the amazing sea views and sunshine.

➤ *Guide Price* £600,000 - £625,000

2



1



1



D



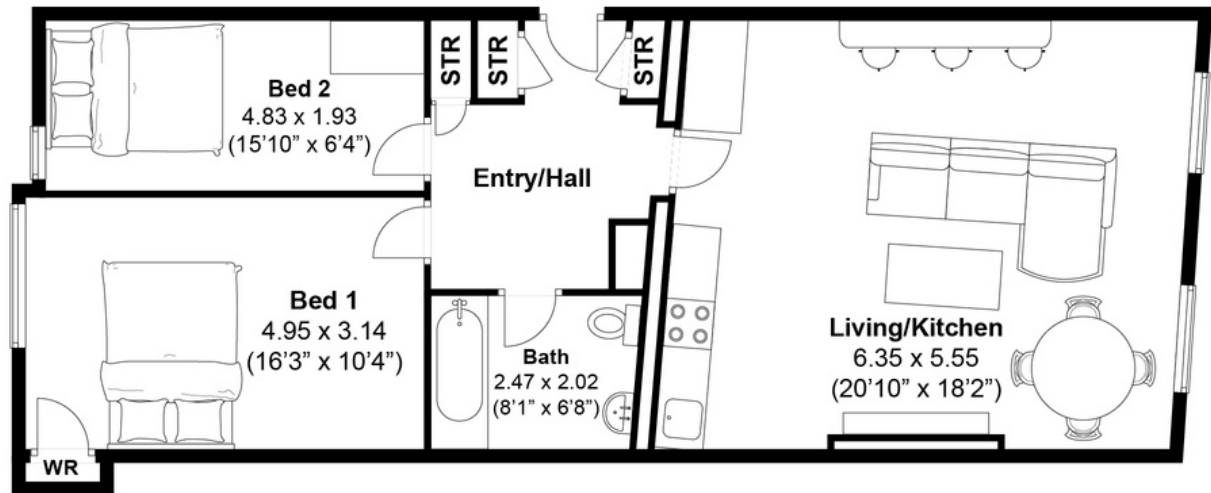
TOTAL FLOOR AREA:

835.2sq. ft. (77.6 sq. m.) approx

Adelaide Crescent, Hove

Approximately 77.6 sqm (835.2 sqft)

mishons





Whatever you're looking for...
We'll help you find it.

mishons

✉ sales@mishons.com

☎ 01273 77 88 77

94 Church Road, Hove, BN3 2EB

Monday-Friday: 8:45 am - 6 pm

Saturday: 9 am - 4 pm

Find us on Facebook and Instagram
@wearemishons or visit mishons.com