



Wilbury Avenue

Hove, BN3 6GH

mishons



A wonderfully presented...

... top floor, two bedroom flat forming part of a beautiful Victorian semi-detached property, situated in one of Hove's premier locations, Wilbury Avenue.

As you enter the flat, the generous entrance hall leads to all the main rooms giving the flat a spacious and homely feel. The open planned living area is tastefully decorated with a beautiful fitted modern kitchen which provides vast amounts of storage with space for a dining room table. In addition there are two double bedrooms and a lovely modern bathroom.

Wilbury Avenue is one of Hove's most sought after residential location's and gives easy access to the seafront. A large range of shops, bars and restaurants can be found along the hustle and bustle of Church Road as well as bus services giving access to the city centre. Hove station can also be found within a short stroll.

 *Offers Over* £345,000

2



1



1

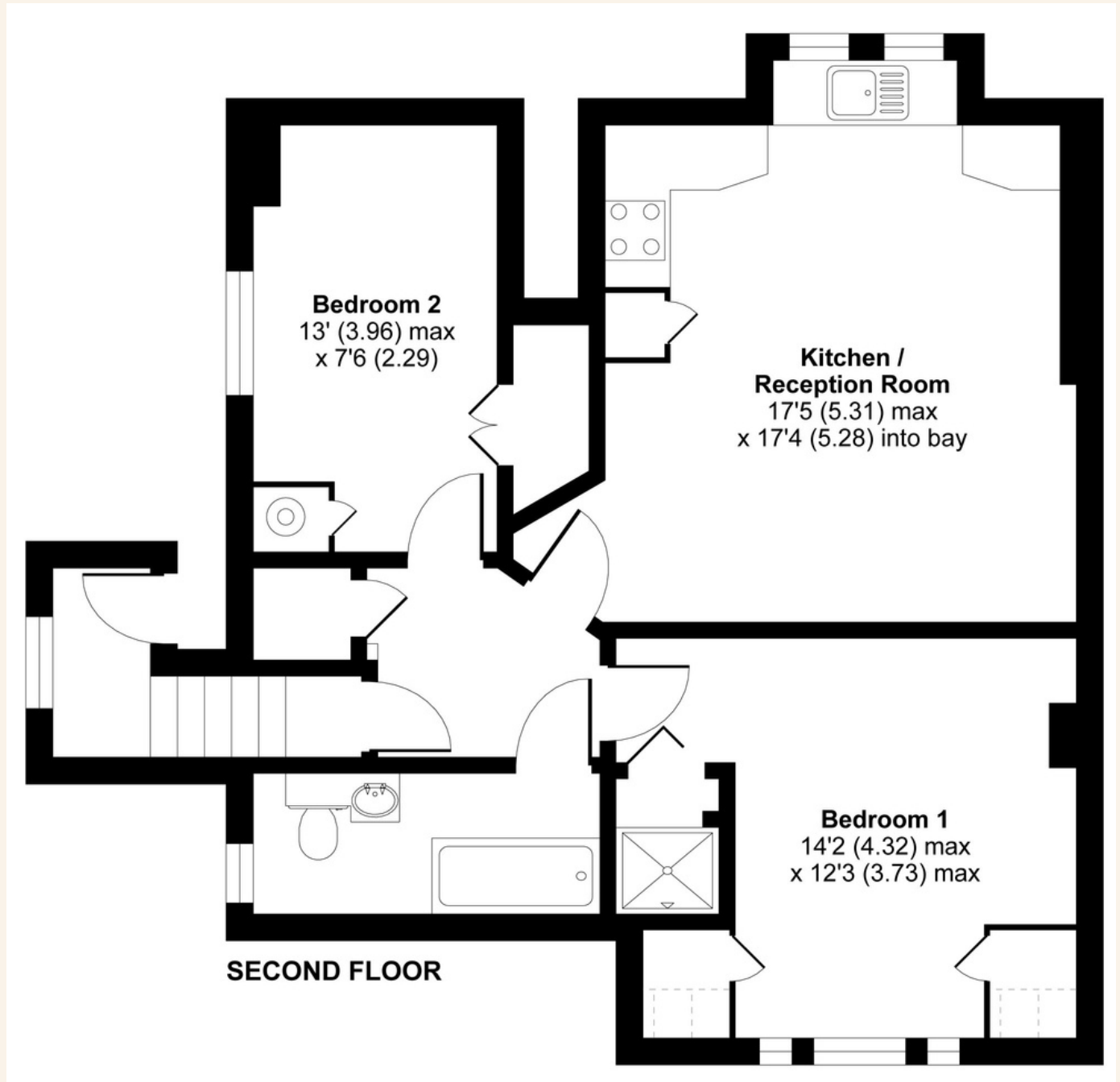


E



TOTAL FLOOR AREA:

671 sq. ft. (62.3sq. m.) approx





Whatever you're looking for...
We'll help you find it.

mishons

✉ sales@mishons.com

☎ 01273 77 88 77

94 Church Road, Hove, BN3 2EB

Monday-Friday: 8:45 am - 6 pm

Saturday: 9 am - 4 pm

Find us on Facebook and Instagram
@wearemishons or visit mishons.com